

For Research Use Only

# KCNA1 Polyclonal antibody

Catalog Number: 18067-1-AP



## Basic Information

**Catalog Number:**

18067-1-AP

**Size:**

150ul, Concentration: 350 ug/ml by Nanodrop;

**Source:**

Rabbit

**Isotype:**

IgG

**Immunogen Catalog Number:**

AG12699

**GenBank Accession Number:**

BC101733

**GeneID (NCBI):**

3736

**UNIPROT ID:**

Q09470

**Full Name:**

potassium voltage-gated channel, shaker-related subfamily, member 1 (episodic ataxia with myokymia)

**Calculated MW:**

495 aa, 56 kDa

**Observed MW:**

86 kDa

**Purification Method:**

Antigen affinity purification

**Recommended Dilutions:**

WB: 1:1000-1:6000

## Applications

**Tested Applications:**

WB, ELISA

**Species Specificity:**

human, mouse, rat

**Positive Controls:**

WB : mouse brain tissue, rat brain tissue

## Background Information

Potassium voltage-gated channel subfamily A member 1 (KCNA1, also known as Kv1.1) is a voltage-gated potassium channel that mediates transmembrane potassium transport in excitable membranes, primarily in the brain and the central nervous system, but also in the kidney (PMID: 19903818; 8845167). KCNA1 expression was reduced in human cancers, and this decrease correlated with an increase in breast cancer aggressiveness (PMID: 23774215). Furthermore, Kv1.1 is expressed in the brain as a mature glycoprotein, which is reported to be 86 kDa (PMID: 16305740).

## Storage

**Storage:**

Store at -20°C. Stable for one year after shipment.

**Storage Buffer:**

PBS with 0.02% sodium azide and 50% glycerol, pH7.3

Aliquoting is unnecessary for -20°C storage

\*\*\* 20ul sizes contain 0.1% BSA

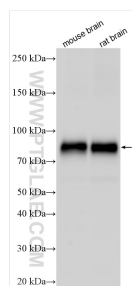
For technical support and original validation data for this product please contact:

T: 1 (888) 4PTGLAB (1-888-478-4522) (toll free in USA), or 1(312) 455-8498 (outside USA)

E: [proteintech@ptglab.com](mailto:proteintech@ptglab.com)  
W: [ptglab.com](http://ptglab.com)

This product is exclusively available under Proteintech Group brand and is not available to purchase from any other manufacturer.

## Selected Validation Data



Various lysates were subjected to SDS PAGE followed by western blot with 18067-1-AP (KCNA1 antibody) at dilution of 1:3000 incubated at room temperature for 1.5 hours.