

For Research Use Only

SGCG Polyclonal antibody

Catalog Number: 18102-1-AP

6 Publications



Basic Information

Catalog Number:

18102-1-AP

Size:

150ul, Concentration: 300 ug/ml by Nanodrop and 153 ug/ml by Bradford method using BSA as the standard;

Source:

Rabbit

Isotype:

IgG

Immunogen Catalog Number:

AG12402

GenBank Accession Number:

BC074777

GeneID (NCBI):

6445

UNIPROT ID:

Q13326

Full Name:

sarcoglycan, gamma (35kDa dystrophin-associated glycoprotein)

Calculated MW:

291 aa, 32 kDa

Observed MW:

35-38 kDa

Purification Method:

Antigen affinity purification

Recommended Dilutions:

WB 1:1000-1:8000

IP 0.5-4.0 ug for 1.0-3.0 mg of total protein lysate

IHC 1:20-1:200

Applications

Tested Applications:

WB, IP, IHC, ELISA

Cited Applications:

WB, IHC, IF, IP

Species Specificity:

human, mouse, rat

Cited Species:

human, mouse

Note-IHC: suggested antigen retrieval with TE buffer pH 9.0; (*) Alternatively, antigen retrieval may be performed with citrate buffer pH 6.0

Positive Controls:

WB: mouse heart tissue, human skeletal muscle tissue, human heart tissue, mouse skeletal muscle tissue, rat heart tissue

IP: mouse heart tissue,

IHC: human heart tissue, human kidney tissue, human lung tissue, human ovary tissue, human placenta tissue, human skin tissue

Notable Publications

Author	Pubmed ID	Journal	Application
Narinder Janghra	26974331	PLoS One	IF
Alison M Blain	29912990	PLoS One	IHC
Mojgan Reza	27477497	Hum Gene Ther Methods	IF

Storage

Storage:

Store at -20°C. Stable for one year after shipment.

Storage Buffer:

PBS with 0.02% sodium azide and 50% glycerol pH 7.3.

Aliquoting is unnecessary for -20°C storage

*** 20ul sizes contain 0.1% BSA

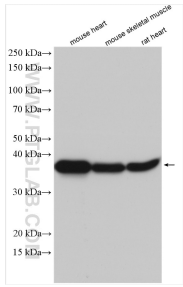
For technical support and original validation data for this product please contact:

T: 1 (888) 4PTGLAB (1-888-478-4522) (toll free in USA), or 1(312) 455-8498 (outside USA)

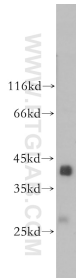
E: proteintech@ptglab.com
W: ptglab.com

This product is exclusively available under Proteintech Group brand and is not available to purchase from any other manufacturer.

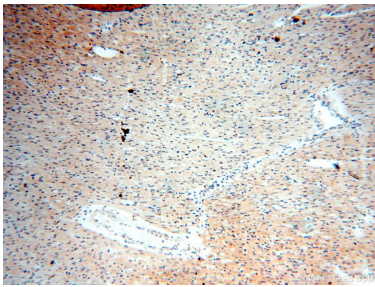
Selected Validation Data



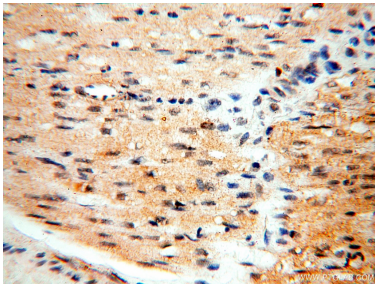
Various lysates were subjected to SDS PAGE followed by western blot with 18102-1-AP (SGCG antibody) at dilution of 1:4000 incubated at room temperature for 1.5 hours.



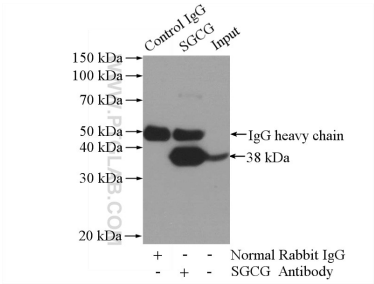
human skeletal muscle tissue were subjected to SDS PAGE followed by western blot with 18102-1-AP (SGCG antibody) at dilution of 1:600 incubated at room temperature for 1.5 hours.



Immunohistochemical analysis of paraffin-embedded human heart using 18102-1-AP (SGCG antibody) at dilution of 1:50 (under 10x lens).



Immunohistochemical analysis of paraffin-embedded human heart using 18102-1-AP (SGCG antibody) at dilution of 1:50 (under 40x lens).



IP result of anti-SGCG (IP:18102-1-AP, 4ug; Detection:18102-1-AP 1:1000) with mouse heart tissue lysate 4000ug.