

For Research Use Only

MSH6 Polyclonal antibody

Catalog Number: 18120-1-AP

Featured Product

13 Publications



Basic Information

Catalog Number:

18120-1-AP

Size:

150ul, Concentration: 260 ug/ml by Nanodrop and 180 ug/ml by Bradford method using BSA as the standard;

Source:

Rabbit

Isotype:

IgG

Immunogen Catalog Number:

AG12645

GenBank Accession Number:

BC004246

GeneID (NCBI):

2956

UNIPROT ID:

P52701

Full Name:

mutS homolog 6 (E. coli)

Calculated MW:

153 kDa

Observed MW:

150-160 kDa

Purification Method:

Antigen affinity purification

Recommended Dilutions:

WB 1:500-1:3000

IP 0.5-4.0 ug for 1.0-3.0 mg of total protein lysate

IHC 1:800-1:3200

IF/ICC 1:50-1:500

Applications

Tested Applications:

WB, IHC, IF/ICC, IP, ELISA

Cited Applications:

WB, IHC, IF, IP

Species Specificity:

human, mouse, rat

Cited Species:

human, mouse

Positive Controls:

WB : HEK-293 cells, HEK-293

IP : HEK-293 cells,

IHC : human colon tissue,

IF/ICC : HeLa cells,

Note-IHC: suggested antigen retrieval with TE buffer pH 9.0; (*) Alternatively, antigen retrieval may be performed with citrate buffer pH 6.0

Background Information

MSH6, also named as DNA mismatch repair protein Msh6 or GTMBP, is a 1360 amino acid protein, which contains one PWWP domain and belongs to the DNA mismatch repair MutS family. MSH6 localizes in the nucleus and is a component of the post-replicative DNA mismatch repair system. Msh2 and Msh6 form a protein complex required to repair mismatches generated during DNA replication.

Notable Publications

| Author | Pubmed ID | Journal | Application |
|---------------|-----------|-------------------|-------------|
| Etsuko Yokota | 29262545 | Oncotarget | WB |
| Ying Shi | 33181035 | DNA Cell Biol | WB |
| Hannah Trost | 36620890 | Nucleic Acids Res | WB |

Storage

Storage:

Store at -20°C. Stable for one year after shipment.

Storage Buffer:

PBS with 0.02% sodium azide and 50% glycerol pH 7.3.

Aliquoting is unnecessary for -20°C storage

*** 20ul sizes contain 0.1% BSA

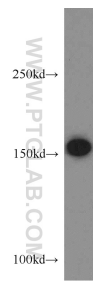
For technical support and original validation data for this product please contact:

T: 1 (888) 4PTGLAB (1-888-478-4522) (toll free in USA), or 1(312) 455-8498 (outside USA)

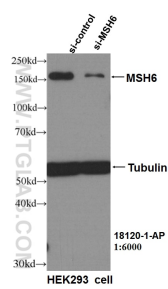
E: proteintech@ptglab.com
W: ptglab.com

This product is exclusively available under Proteintech Group brand and is not available to purchase from any other manufacturer.

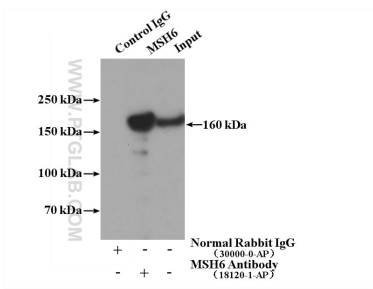
Selected Validation Data



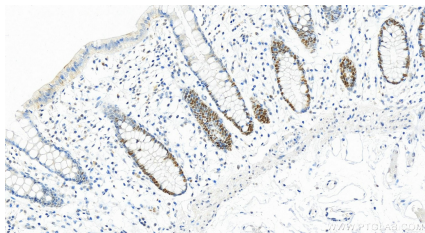
HEK-293 cells were subjected to SDS PAGE followed by western blot with 18120-1-AP (MSH6 antibody) at dilution of 1:500 incubated at room temperature for 1.5 hours.



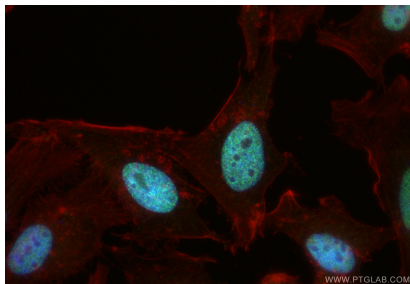
WB result of MSH6 antibody (18120-1-AP, 1:6000) with si-Control and si-MSH6 transfected HEK293 cells.



IP result of anti-MSH6 (IP:18120-1-AP, 4ug; Detection:18120-1-AP 1:600) with HEK-293 cells lysate 1120ug.



Immunohistochemical analysis of paraffin-embedded human normal colon slide using 18120-1-AP (MSH6 antibody) at dilution of 1:1600 (under 20x lens). Heat mediated antigen retrieval with Tris-EDTA buffer (pH 9.0).



Immunofluorescent analysis of (4% PFA) fixed HeLa cells using MSH6 antibody (18120-1-AP) at dilution of 1:200 and CoraLite®488-Conjugated Goat Anti-Rabbit IgG(H+L) (SA00013-2), CL594-phalloidin (red).