

For Research Use Only

# RAB11FIP2 Polyclonal antibody

Catalog Number: 18136-1-AP

Featured Product

4 Publications



## Basic Information

<b>Catalog Number:</b> 18136-1-AP	<b>GenBank Accession Number:</b> BC075073	<b>Purification Method:</b> Antigen affinity purification
<b>Size:</b> 150ul , Concentration: 787 ug/ml by Nanodrop;	<b>GeneID (NCBI):</b> 22841	<b>Recommended Dilutions:</b> WB: 1:2000-1:12000 IF/ICC: 1:50-1:500
<b>Source:</b> Rabbit	<b>UNIPROT ID:</b> Q7L804	
<b>Isotype:</b> IgG	<b>Full Name:</b> RAB11 family interacting protein 2 (class I)	
<b>Immunogen Catalog Number:</b> AG12736	<b>Calculated MW:</b> 512 aa, 58 kDa	
	<b>Observed MW:</b> 58 kDa	

## Applications

<b>Tested Applications:</b> WB, IF/ICC, ELISA	<b>Positive Controls:</b> WB : mouse brain tissue, mouse liver tissue, HEK-293 cells, rat brain tissue IF/ICC : HeLa cells, HepG2 cells
<b>Cited Applications:</b> WB, IF	
<b>Species Specificity:</b> human, mouse, rat	
<b>Cited Species:</b> human	

## Background Information

RAB11FIP2, or RAB11 family interacting protein 2, is a protein that plays a crucial role in intracellular trafficking, particularly in the recycling of endocytic vesicles. It is involved in several cellular processes, including TRAM-dependent toll-like receptor 4 signaling pathway, phagocytosis, and positive regulation of GTPase activity. RAB11FIP2 is localized in endosomes, nucleoplasm, and phagocytic cups, and it is expressed ubiquitously in various tissues, with higher expression in endometrium and brain. RAB11FIP2 interacts with the actin-based motor myo5b and the small GTPase Rab11, which are key components in the regulation of vesicle tethering and transport along actin filaments. This interaction is particularly important for processes such as cell polarization, motility, and lumen formation in multicellular structures. .

## Notable Publications

Author	Pubmed ID	Journal	Application
Jenny C Schafer	26790954	Exp Cell Res	IF
Jenny C Schafer	24372966	Traffic	WB
Katja Mölleken	28787457	PLoS Pathog	WB,IF

## Storage

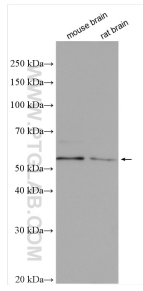
**Storage:**  
Store at -20°C. Stable for one year after shipment.  
**Storage Buffer:**  
PBS with 0.02% sodium azide and 50% glycerol, pH7.3  
**Aliquoting is unnecessary for -20°C storage**

\*\*\* 20ul sizes contain 0.1% BSA

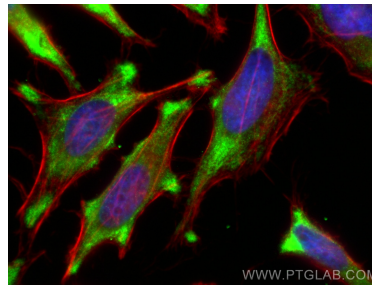
For technical support and original validation data for this product please contact:  
T: 1 (888) 4PTGLAB (1-888-478-4522) (toll free in USA), or 1(312) 455-8498 (outside USA)  
E: proteintech@ptglab.com  
W: ptglab.com

This product is exclusively available under Proteintech Group brand and is not available to purchase from any other manufacturer.

## Selected Validation Data



Various lysates were subjected to SDS PAGE followed by western blot with 18136-1-AP (RAB11FIP2 antibody) at dilution of 1:6000 incubated at room temperature for 1.5 hours.



Immunofluorescent analysis of (-20°C Ethanol) fixed HeLa cells using RAB11FIP2 antibody (18136-1-AP) at dilution of 1:200 and CoraLite® 488-Conjugated Goat Anti-Rabbit IgG(H+L) (SA00013-2), CL594-Phalloidin (red).