

CLEC4G

Polyclonal ANTIBODY

Catalog Number: 18173-1-AP

Basic Information

Catalog Number: 18173-1-AP	GenBank Accession Number: BC093691	Recommended Dilutions: WB 1:200-1:1000 IHC 1:50-1:500
Size: 47 µg/150 µl	GeneID (NCBI): 339390	
Source: Rabbit	Full Name: C-type lectin domain family 4, member G	
Isotype: IgG	Calculated MW: 293aa, 33 kDa	
Purification Method: Antigen affinity purification	Observed MW: 40 kDa	
Immunogen Catalog Number: AG12837		

Applications

Tested Applications: IHC, WB, ELISA	Positive Controls: WB : HUVEC cells; IHC : human tonsillitis tissue;
Species Specificity: human	
Note: suggested antigen retrieval with TE buffer pH 9.0; (*) Alternatively, antigen retrieval may be performed with citrate buffer pH 6.0	

Background Information

CLEC4G, also known as LSECtin, is a member of the C-type lectin family of glycan-binding receptors that is expressed on sinusoidal endothelial cells in liver and lymph nodes. CLEC4G is a type II transmembrane protein of ~40 kDa in size with a single C-type lectin-like domain at the COOH terminus, closest in homology to DC-SIGNR, DC-SIGN, and CD23. CLEC4G has been reported as a receptor for Japanese encephalitis virus (PubMed:24623080), ebolavirus (PubMed:16051304), SARS coronavirus/SARS-CoV (PubMed:16051304), lassa virus and Lymphocytic choriomeningitis virus glycoprotein (PubMed:22156524, PubMed:22673088).

Notable Publications

Author	Pubmed ID	Journal	Application
--------	-----------	---------	-------------

Storage

Storage:
Store at -20°C. Stable for one year after shipment.
Storage Buffer:
PBS with 0.02% sodium azide and 50% glycerol pH 7.3.
Aliquoting is unnecessary for -20°C storage

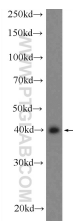
For technical support and original validation data for this product please contact:

T: 1 (888) 4PTGLAB (1-888-478-4522) (toll free in USA), or 1(312) 455-8498 (outside USA)

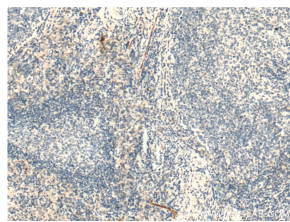
E: proteintech@ptglab.com
W: ptglab.com

This product is exclusively available under Proteintech Group brand and is not available to purchase from any other manufacturer.

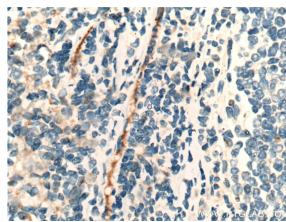
Selected Validation Data



HUVEC cells were subjected to SDS PAGE followed by western blot with 18173-1-AP (CLEC4G Antibody) at dilution of 1:300 incubated at 4 degree celsius over night



Immunohistochemistry of paraffin-embedded human tonsillitis tissue slide using 18173-1-AP (CLEC4G Antibody) at dilution of 1:200 (under 10x lens). heat mediated antigen retrieved with Tris-EDTA buffer(pH9).



Immunohistochemistry of paraffin-embedded human tonsillitis tissue slide using 18173-1-AP (CLEC4G Antibody) at dilution of 1:200 (under 40x lens). heat mediated antigen retrieved with Tris-EDTA buffer(pH9).