

For Research Use Only

RBM24 Polyclonal antibody

Catalog Number: 18178-1-AP

Featured Product

11 Publications



Basic Information

Catalog Number:

18178-1-AP

Size:

150ul, Concentration: 700 ug/ml by Nanodrop;

Source:

Rabbit

Isotype:

IgG

Immunogen Catalog Number:

AG12871

GenBank Accession Number:

BC104808

GeneID (NCBI):

221662

UNIPROT ID:

Q9BX46

Full Name:

RNA binding motif protein 24

Calculated MW:

191 aa, 20 kDa

Observed MW:

18-25 kDa

Purification Method:

Antigen affinity purification

Recommended Dilutions:

WB 1:500-1:1000

IHC 1:50-1:500

IF-P 1:50-1:500

Applications

Tested Applications:

WB, IHC, IF-P, ELISA

Cited Applications:

WB, IHC, IF, RIP

Species Specificity:

human, mouse

Cited Species:

human, mouse, chicken

Note-IHC: suggested antigen retrieval with TE buffer pH 9.0; (*) Alternatively, antigen retrieval may be performed with citrate buffer pH 6.0

Positive Controls:

WB : mouse heart tissue,

IHC : mouse skeletal muscle tissue,

IF-P : mouse skeletal muscle tissue,

Background Information

RNA-binding proteins have a pivotal role in post-transcriptionally regulating gene expression. During early development, they exhibit temporally and spatially regulated expression patterns and affect the proteome of a single cell by controlling alternative splicing, transport, localization, and stability of their target RNAs (PMID: 22510371). Their expression is tissue-specific, and their crucial influence on the protein setup, especially in muscle cells, has become recognized recently (PMID: 21982546). RBM24 is one RNA-binding protein that is fundamental in regulating cardiac gene expression, sarcomeric assembly, and cardiac contractility. It may thus represent a novel pathway to cardiomyopathy (PMID: 20338237).

Notable Publications

Author	Pubmed ID	Journal	Application
Raphaëlle Grifone	25217815	Mech Dev	IF
Suhong Sun	34477109	Elife	IF
Shulei Gong	36352154	J Mol Med (Berl)	RIP,IHC

Storage

Storage:

Store at -20°C. Stable for one year after shipment.

Storage Buffer:

PBS with 0.02% sodium azide and 50% glycerol, pH7.3

Aliquoting is unnecessary for -20°C storage

*** 20ul sizes contain 0.1% BSA

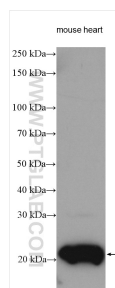
For technical support and original validation data for this product please contact:

T: 1 (888) 4PTGLAB (1-888-478-4522) (toll free in USA), or 1(312) 455-8498 (outside USA)

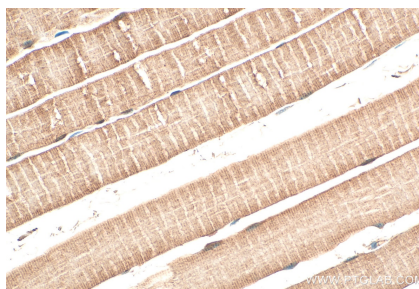
E: proteintech@ptglab.com
W: ptglab.com

This product is exclusively available under Proteintech Group brand and is not available to purchase from any other manufacturer.

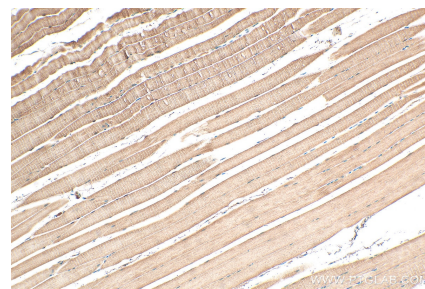
Selected Validation Data



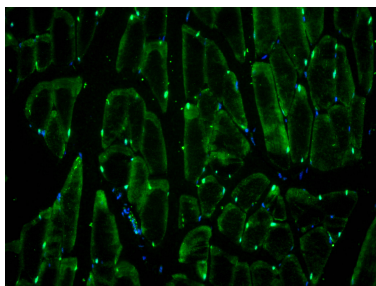
mouse heart tissue lysates were subjected to SDS PAGE followed by western blot with 18178-1-AP (RBM24 antibody) at dilution of 1:800 incubated at room temperature for 1.5 hours.



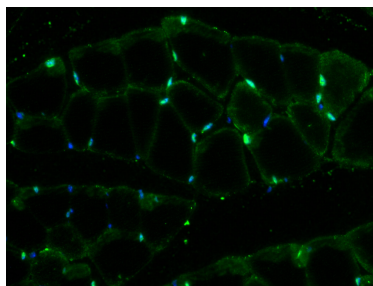
Immunohistochemical analysis of paraffin-embedded mouse skeletal muscle tissue slide using 18178-1-AP (RBM24 antibody) at dilution of 1:200 (under 40x lens). Heat mediated antigen retrieval with Tris-EDTA buffer (pH 9.0).



Immunohistochemical analysis of paraffin-embedded mouse skeletal muscle tissue slide using 18178-1-AP (RBM24 antibody) at dilution of 1:200 (under 10x lens). Heat mediated antigen retrieval with Tris-EDTA buffer (pH 9.0).



Immunofluorescent analysis of (4% PFA) fixed mouse skeletal muscle tissue using RBM24 antibody (18178-1-AP) at dilution of 1:200 and CoraLite®488-Conjugated AffiniPure Goat Anti-Rabbit IgG(H+L).



Immunofluorescent analysis of (4% PFA) fixed mouse skeletal muscle tissue using RBM24 antibody (18178-1-AP) at dilution of 1:200 and CoraLite®488-Conjugated AffiniPure Goat Anti-Rabbit IgG(H+L).