

Cyclin A2 Polyclonal ANTIBODY

Catalog Number: 18202-1-AP

Featured Product

37 Publications

Basic Information

Catalog Number:
18202-1-AP

Size:
50 µg/150 µl

Source:
Rabbit

Isotype:
IgG

Purification Method:
Antigen affinity purification

Immunogen Catalog Number:
AG12765

GenBank Accession Number:
BC104783

GeneID (NCBI):
890

Full Name:
cyclin A2

Calculated MW:
432aa, 49 kDa

Observed MW:
48-52 kDa

Recommended Dilutions:

WB 1:1000-1:8000

IP 0.5-4.0 µg for IP and 1:500-1:1000 for WB

IF 1:50-1:500

Applications

Tested Applications:

IF, IP, WB, ELISA

Cited Applications:

WB

Species Specificity:

human, mouse

Cited Species:

human, monkey, mouse

Positive Controls:

WB : HL-60 cells; NIH/3T3 cells, HeLa cells, K-562 cells, U-937 cells, MCF-7 cells

IP : HL-60 cells;

IF : HeLa cells;

Background Information

Cyclin A2 belongs to the highly conserved cyclin family, whose members are characterized by a dramatic periodicity in protein abundance through the cell cycle. Cyclins function as regulators of CDK kinases. Different cyclins exhibit distinct expression and degradation patterns which contribute to the temporal coordination of each mitotic event. In contrast to cyclin A1, which is present only in germ cells, this cyclin is expressed in all tissues tested. Cyclin A2 binds and activates CDC2 or CDK2 kinases, and thus promotes both cell cycle G1/S and G2/M transitions. Cyclin A2 could be phosphorylated during the G2/M

Notable Publications

Author	Pubmed ID	Journal	Application
Wei-Liang Ye	26419507	Sci Rep	WB
Langdong Chen	27754507	Mbl Biosyst	
Zhen-Hua Chen	27829996	Am J Transl Res	WB

Storage

Storage:

Store at -20°C. Stable for one year after shipment.

Storage Buffer:

PBS with 0.02% sodium azide and 50% glycerol pH 7.3.

Aliquoting is unnecessary for -20°C storage

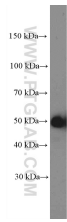
For technical support and original validation data for this product please contact:

T: 1 (888) 4PTGLAB (1-888-478-4522) (toll free in USA), or 1(312) 455-8498 (outside USA)

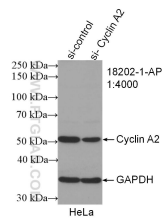
E: proteintech@ptglab.com
W: ptglab.com

This product is exclusively available under Proteintech Group brand and is not available to purchase from any other manufacturer.

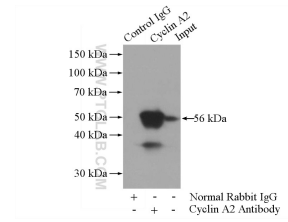
Selected Validation Data



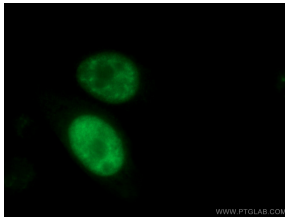
HL-60 cells were subjected to SDS PAGE followed by western blot with 18202-1-AP (Cyclin A2 Antibody) at dilution of 1:4000 incubated at room temperature for 1.5 hours



WB result of Cyclin A2 antibody (18202-1-AP: 1:4000; incubated at room temperature for 1.5 hours) with sh-Control and sh-Cyclin A2 transfected HeLa cells



IP Result of anti-Cyclin A2 (IP: 18202-1-AP, 3ug; Detection: 18202-1-AP 1:500) with HL-60 cells lysate 4000ug.



Immunofluorescent analysis of (4% PFA) fixed HeLa cells using 18202-1-AP (Cyclin A2 antibody) at dilution of 1:50 and Alexa Fluor 488-Conjugated AffiniPure Goat Anti-Rabbit IgG(H+L)