

For Research Use Only

RPS9 Polyclonal antibody

Catalog Number: 18215-1-AP

Featured Product

3 Publications



Basic Information

Catalog Number:

18215-1-AP

Size:

150UL, Concentration: 200 µg/ml by Bradford method using BSA as the standard;

Source:

Rabbit

Isotype:

IgG

Immunogen Catalog Number:

AG12945

GenBank Accession Number:

BC000802

GeneID (NCBI):

6203

Full Name:

ribosomal protein S9

Calculated MW:

23 kDa

Observed MW:

25 kDa

Purification Method:

Antigen affinity purification

Recommended Dilutions:

WB 1:500-1:1000

IHC 1:20-1:200

IF 1:50-1:500

Applications

Tested Applications:

IF, IHC, WB, ELISA

Cited Applications:

IHC, WB

Species Specificity:

human, mouse

Cited Species:

human

Note-IHC: suggested antigen retrieval with TE buffer pH 9.0; (*) Alternatively, antigen retrieval may be performed with citrate buffer pH 6.0

Positive Controls:

WB: mouse uterus tissue, HeLa cells, mouse ovary tissue

IHC: human kidney tissue, human lung tissue, human ovary tissue, human skin tissue, human testis tissue

IF: HeLa cells,

Background Information

Notable Publications

Author	Pubmed ID	Journal	Application
Haiping Tang	27325206	Sci Rep	WB
Meijuan Zou	33371207	Genes (Basel)	WB
Dong-Dong Cheng	28928861	J Cancer	WB,IHC

Storage

Storage:

Store at -20°C. Stable for one year after shipment.

Storage Buffer:

PBS with 0.02% sodium azide and 50% glycerol pH 7.3.

Aliquoting is unnecessary for -20°C storage

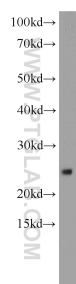
For technical support and original validation data for this product please contact:

T: 1 (888) 4PTGLAB (1-888-478-4522) (toll free in USA), or 1(312) 455-8498 (outside USA)

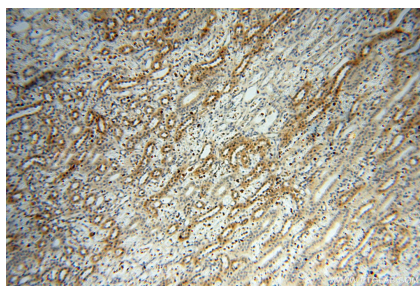
E: proteintech@ptglab.com
W: ptglab.com

This product is exclusively available under Proteintech Group brand and is not available to purchase from any other manufacturer.

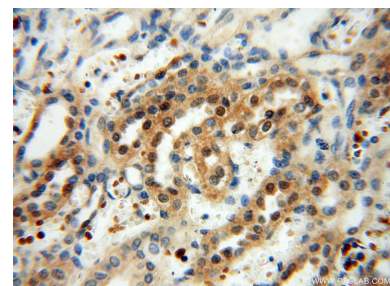
Selected Validation Data



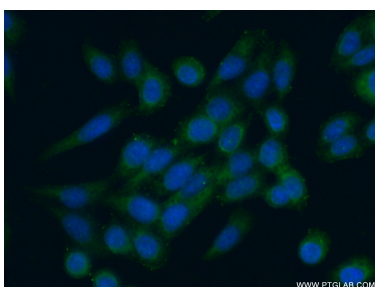
mouse uterus tissue were subjected to SDS PAGE followed by western blot with 18215-1-AP (RPS9 antibody) at dilution of 1:500 incubated at room temperature for 1.5 hours.



Immunohistochemical analysis of paraffin-embedded human kidney using 18215-1-AP (RPS9 antibody) at dilution of 1:100 (under 10x lens).



Immunohistochemical analysis of paraffin-embedded human kidney using 18215-1-AP (RPS9 antibody) at dilution of 1:100 (under 40x lens).



Immunofluorescent analysis of (-20 Ethanol) fixed HeLa cells using 18215-1-AP (RPS9 antibody) at dilution of 1:50 and Alexa Fluor 488-conjugated AffiniPure Goat Anti-Rabbit IgG(H+L).