

For Research Use Only

SHROOM1 Polyclonal antibody

Catalog Number: 18218-1-AP

1 Publications



Basic Information

Catalog Number:

18218-1-AP

Size:

150ul , Concentration: 600 ug/ml by Nanodrop and 260 ug/ml by Bradford method using BSA as the standard;

Source:

Rabbit

Isotype:

IgG

Immunogen Catalog Number:

AG12977

GenBank Accession Number:

BC104914

GeneID (NCBI):

134549

UNIPROT ID:

Q2M3G4

Full Name:

shroom family member 1

Calculated MW:

852 aa, 91 kDa

Observed MW:

100-130 kDa

Purification Method:

Antigen affinity purification

Recommended Dilutions:

WB 1:500-1:3000

IP 0.5-4.0 ug for 1.0-3.0 mg of total protein lysate

Applications

Tested Applications:

WB, IP, ELISA

Cited Applications:

WB

Species Specificity:

human

Cited Species:

human

Positive Controls:

WB : MCF7 cells, A375 cells

IP : MCF-7 cells,

Notable Publications

Author	Pubmed ID	Journal	Application
Mohsan Saeed	32997711	PLoS Pathog	WB

Storage

Storage:

Store at -20°C. Stable for one year after shipment.

Storage Buffer:

PBS with 0.02% sodium azide and 50% glycerol pH 7.3.

Aliquoting is unnecessary for -20°C storage

*** 20ul sizes contain 0.1% BSA

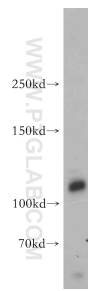
For technical support and original validation data for this product please contact:

T: 1 (888) 4PTGLAB (1-888-478-4522) (toll free in USA), or 1(312) 455-8498 (outside USA)

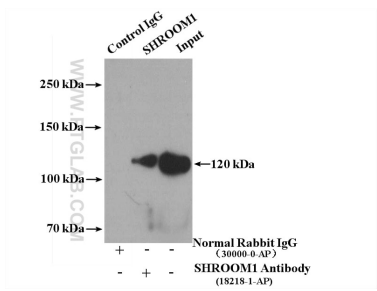
E: proteintech@ptglab.com
W: ptglab.com

This product is exclusively available under Proteintech Group brand and is not available to purchase from any other manufacturer.

Selected Validation Data



MCF7 cells were subjected to SDS PAGE followed by western blot with 18218-1-AP (SHROOM1 antibody) at dilution of 1:500 incubated at room temperature for 1.5 hours.



IP result of anti-SHROOM1 (IP:18218-1-AP, 4ug; Detection:18218-1-AP 1:700) with MCF-7 cells lysate 3600 ug.