

For Research Use Only

# IκB Alpha Polyclonal antibody

Catalog Number: 18220-1-AP

10 Publications



## Basic Information

### Catalog Number:

18220-1-AP

### Size:

150ul, Concentration: 1000 ug/ml by Nanodrop and 347 ug/ml by Bradford method using BSA as the standard;

### Source:

Rabbit

### Isotype:

IgG

### Immunogen Catalog Number:

AG12979

### GenBank Accession Number:

BC004983

### GeneID (NCBI):

4792

### UNIPROT ID:

P25963

### Full Name:

nuclear factor of kappa light polypeptide gene enhancer in B-cells inhibitor, alpha

### Calculated MW:

36 kDa

### Observed MW:

39 kDa

### Purification Method:

Antigen affinity purification

### Recommended Dilutions:

WB 1:500-1:3000

IP 0.5-4.0 ug for 1.0-3.0 mg of total protein lysate

IHC 1:50-1:500

IF/ICC 1:200-1:800

## Applications

### Tested Applications:

WB, IHC, IF/ICC, IP, ELISA

### Cited Applications:

WB

### Species Specificity:

human

### Cited Species:

human, mouse, rat

### Positive Controls:

WB: HL-60 cells, HeLa cells, Jurkat cells

IP: HeLa cells,

IHC: human kidney tissue, human liver tissue, human prostate cancer tissue, human stomach tissue

IF/ICC: HeLa cells,

**Note-IHC: suggested antigen retrieval with TE buffer pH 9.0; (\*) Alternatively, antigen retrieval may be performed with citrate buffer pH 6.0**

## Background Information

Nuclear factor of kappa light polypeptide gene enhancer in B-cells inhibitor, alpha (NFKBIA, synonyms: IKBA, MAD-3, NFKB1). NFKB1 or NFKB2 is bound to REL, RELA, or RELB to form the NFKB complex. The NFKB complex is inhibited by I-kappa-B proteins (NFKBIA or NFKBIB), which inactivate NF-kappa-B by trapping it in the cytoplasm. Phosphorylation of serine residues on the I-kappa-B proteins by kinases (IKBKA, or IKBKB) marks them for destruction via the ubiquitination pathway, thereby allowing activation of the NF-kappa-B complex. Activated NFKB complex translocates into the nucleus and binds DNA at kappa-B-binding motifs such as 5-prime GGGRNYYCC 3-prime or 5-prime HGGARNYYCC 3-prime.

## Notable Publications

Author	Pubmed ID	Journal	Application
Xueling Zhou	33110436	Evid Based Complement Alternat Med	WB
Jian Zhan	27716383	J Neuroinflammation	WB
Qiang Tu	26647763	Mol Med Rep	WB

## Storage

### Storage:

Store at -20°C. Stable for one year after shipment.

### Storage Buffer:

PBS with 0.02% sodium azide and 50% glycerol pH 7.3.

Aliquoting is unnecessary for -20°C storage

\*\*\* 20ul sizes contain 0.1% BSA

For technical support and original validation data for this product please contact:

T: 1 (888) 4PTGLAB (1-888-478-4522) (toll free in USA), or 1(312) 455-8498 (outside USA)

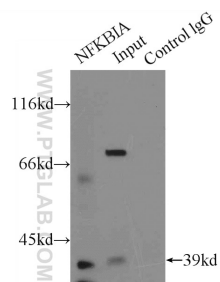
E: [proteintech@ptglab.com](mailto:proteintech@ptglab.com)  
W: [ptglab.com](http://ptglab.com)

**This product is exclusively available under Proteintech Group brand and is not available to purchase from any other manufacturer.**

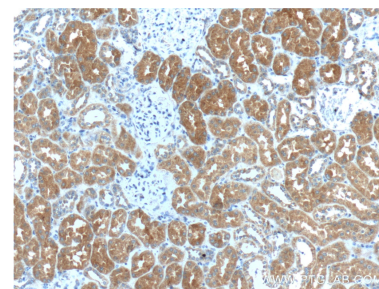
## Selected Validation Data



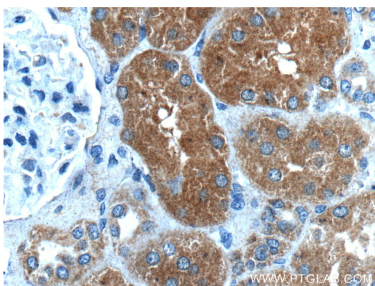
HL-60 cells were subjected to SDS PAGE followed by western blot with 18220-1-AP (IκB alpha antibody) at dilution of 1:500 incubated at room temperature for 1.5 hours.



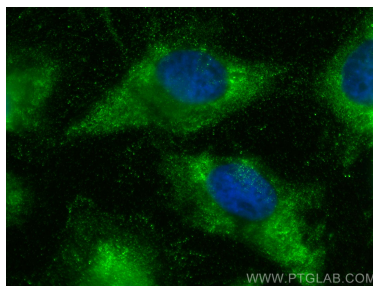
IP result of anti-IκB Alpha (IP:18220-1-AP, 5ug; Detection:18220-1-AP 1:500) with HeLa cells lysate 2000ug.



Immunohistochemical analysis of paraffin-embedded human kidney tissue slide using 18220-1-AP (IκB alpha antibody at dilution of 1:200 (under 10x lens).



Immunohistochemical analysis of paraffin-embedded human kidney tissue slide using 18220-1-AP (IκB alpha antibody at dilution of 1:200 (under 40x lens).



Immunofluorescent analysis of (4% PFA) fixed HeLa cells using IκB Alpha antibody (18220-1-AP) at dilution of 1:400 and CoraLite®488-Conjugated Goat Anti-Rabbit IgG(H+L).