

For Research Use Only

PDIA6 Polyclonal antibody

Catalog Number: 18233-1-AP **9 Publications**



Basic Information

Catalog Number: 18233-1-AP	GenBank Accession Number: BC001312	Purification Method: Antigen affinity purification
Size: 150ul , Concentration: 450 µg/ml by Nanodrop and 333 µg/ml by Bradford method using BSA as the standard;	GeneID (NCBI): 10130	Recommended Dilutions: WB 1:1000-1:4000 IP 0.5-4.0 ug for IP and 1:1000-1:6000 for WB
Source: Rabbit	Full Name: protein disulfide isomerase family A, member 6	IHC 1:20-1:200 IF 1:20-1:200
Isotype: IgG	Calculated MW: 48 kDa, 54 kDa	
Immunogen Catalog Number: AG12940	Observed MW: 48-54 kDa	

Applications

Tested Applications:

IF, IHC, IP, WB, ELISA

Cited Applications:

IF, IHC, WB

Species Specificity:

human, mouse, rat

Cited Species:

human, mouse

Note-IHC: suggested antigen retrieval with TE buffer pH 9.0; (*) Alternatively, antigen retrieval may be performed with citrate buffer pH 6.0

Positive Controls:

WB: rat kidney tissue, mouse heart tissue, mouse liver tissue, mouse kidney tissue, mouse lung tissue, HeLa cells, L02 cells, HEK-293 cells

IP: HEK-293 cells,

IHC: human stomach tissue, human spleen tissue, human stomach cancer tissue

IF: HeLa cells,

Background Information

PDIA6 (Protein disulfide-isomerase A6) is also named as ERP5, P5, TXNDC7 and belongs to the protein disulfide isomerase family. It is one of the endoplasmic reticulum (ER) resident proteins that catalyze formation, reduction, and isomerization of disulfide bonds in proteins and are thought to play a role in folding of disulfide-bonded proteins (PMID:7590364). It has 2 isoforms produced by alternative splicing. This antibody is specific to PDIA6.

Notable Publications

Author	Pubmed ID	Journal	Application
Bing Sun	27684953	PLoS One	WB
Nirav Florian Chhabra	34487921	Mol Metab	WB
Soma Samanta	29262583	Oncotarget	WB, IHC

Storage

Storage:

Store at -20°C. Stable for one year after shipment.

Storage Buffer:

PBS with 0.02% sodium azide and 50% glycerol pH 7.3.

Aliquoting is unnecessary for -20°C storage

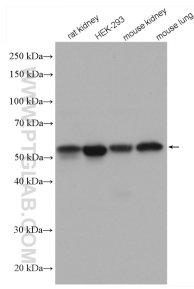
For technical support and original validation data for this product please contact:

T: 1 (888) 4PTGLAB (1-888-478-4522) (toll free in USA), or 1(312) 455-8498 (outside USA)

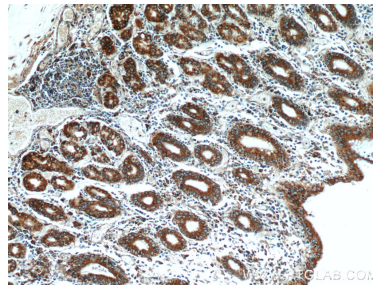
E: proteintech@ptglab.com
W: ptglab.com

This product is exclusively available under Proteintech Group brand and is not available to purchase from any other manufacturer.

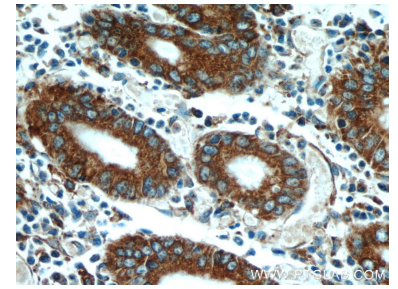
Selected Validation Data



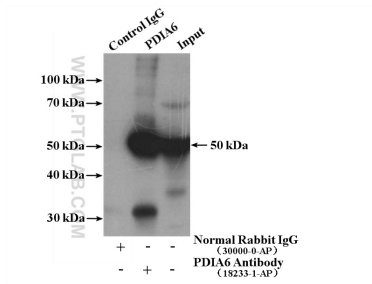
Various lysates were subjected to SDS PAGE followed by western blot with 18233-1-AP (PDIA6 antibody) at dilution of 1:2000 incubated at room temperature for 1.5 hours.



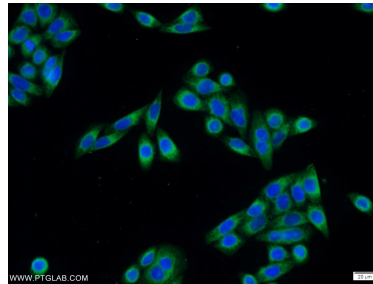
Immunohistochemical analysis of paraffin-embedded human stomach using 18233-1-AP (PDIA6 antibody) at dilution of 1:50 (under 10x lens).



Immunohistochemical analysis of paraffin-embedded human stomach using 18233-1-AP (PDIA6 antibody) at dilution of 1:50 (under 40x lens).



IP Result of anti-PDIA6 (IP:18233-1-AP, 4ug; Detection:18233-1-AP 1:3000) with HEK-293 cells lysate 3000ug.



Immunofluorescent analysis of HeLa cells using 18233-1-AP (PDIA6 antibody) at dilution of 1:50 and Alexa Fluor 488-conjugated AffiniPure Goat Anti-Rabbit IgG(H+L).