

For Research Use Only

CHST3 Polyclonal antibody

Catalog Number: 18242-1-AP

4 Publications



Basic Information

Catalog Number: 18242-1-AP	GenBank Accession Number: BC093690	Purification Method: Antigen affinity purification
Size: 150UL, Concentration: 400 µg/ml by Nanodrop and 213 µg/ml by Bradford method using BSA as the standard;	GeneID (NCBI): 9469	Recommended Dilutions: WB 1:500-1:1000 IHC 1:20-1:200
Source: Rabbit	Full Name: carbohydrate (chondroitin 6) sulfotransferase 3	
Isotype: IgG	Calculated MW: 479 aa, 55 kDa	
Immunogen Catalog Number: AG13008	Observed MW: 67 kDa	

Applications

Tested Applications: IHC, WB, ELISA	Positive Controls: WB : mouse heart tissue, IHC : human breast cancer tissue,
Cited Applications: IHC, WB	
Species Specificity: human, mouse, rat	
Cited Species: human, mouse	
Note-IHC: suggested antigen retrieval with TE buffer pH 9.0; (*) Alternatively, antigen retrieval may be performed with citrate buffer pH 6.0	

Background Information

Notable Publications

Author	Pubmed ID	Journal	Application
Jing Han	28274888	Osteoarthritis Cartilage	IHC
Liyun Wang	31175635	Biol Trace Elem Res	WB
Jian Lei	31845005	Histochem Cell Biol	IHC

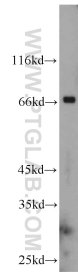
Storage

Storage:
Store at -20°C. Stable for one year after shipment.
Storage Buffer:
PBS with 0.02% sodium azide and 50% glycerol pH 7.3.
Aliquoting is unnecessary for -20°C storage

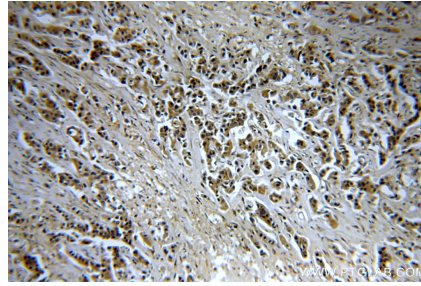
For technical support and original validation data for this product please contact:
T: 1 (888) 4PTGLAB (1-888-478-4522) (toll free in USA), or 1(312) 455-8498 (outside USA)
E: proteintech@ptglab.com
W: ptglab.com

This product is exclusively available under Proteintech Group brand and is not available to purchase from any other manufacturer.

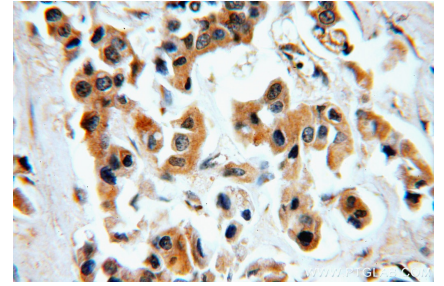
Selected Validation Data



mouse heart tissue were subjected to SDS PAGE followed by western blot with 18242-1-AP (CHST3 antibody) at dilution of 1:800 incubated at room temperature for 1.5 hours.



Immunohistochemical analysis of paraffin-embedded human breast cancer using 18242-1-AP (CHST3 antibody) at dilution of 1:50 (under 10x lens).



Immunohistochemical analysis of paraffin-embedded human breast cancer using 18242-1-AP (CHST3 antibody) at dilution of 1:50 (under 40x lens).