

For Research Use Only

APOE Polyclonal antibody

Catalog Number: 18254-1-AP **4 Publications**



Basic Information

Catalog Number:

18254-1-AP

Size:

150ul , Concentration: 400 µg/ml by Nanodrop and 333 µg/ml by Bradford method using BSA as the standard;

Source:

Rabbit

Isotype:

IgG

Immunogen Catalog Number:

AG13070

GenBank Accession Number:

BC003557

GeneID (NCBI):

348

Full Name:

apolipoprotein E

Calculated MW:

36 kDa

Observed MW:

34-38 kDa

Purification Method:

Antigen affinity purification

Recommended Dilutions:

WB 1:500-1:5000

Applications

Tested Applications:

FC (intra), WB, ELISA

Cited Applications:

IHC, WB

Species Specificity:

human, mouse

Cited Species:

human, mouse

Positive Controls:

WB : human plasma, HuH-7 cells, mouse serum

Background Information

The apolipoprotein E (APOE) is a 299-amino acid polypeptide that mediates the binding, internalization, and catabolism of lipoprotein particles, and also serves as a ligand for the LDL (apo B/E) receptor and for the specific apo-E receptor (chylomicron remnant) of hepatic tissues. The very strong association of the APOE ε4 allele with AD risk and its role in the accumulation of amyloid β in brains of people and animal models solidify the biological relevance of APOE isoforms but do not provide mechanistic insight.

Notable Publications

Author	Pubmed ID	Journal	Application
Da-Yuan Chen	33140044	bioRxiv	WB
Yuanping Shi	33309167	J Genet Genomics	WB
Xiaohui Liu	29123261	Br J Cancer	IHC

Storage

Storage:

Store at -20°C. Stable for one year after shipment.

Storage Buffer:

PBS with 0.02% sodium azide and 50% glycerol pH 7.3.

Aliquoting is unnecessary for -20°C storage

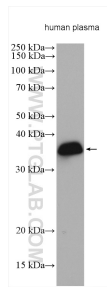
For technical support and original validation data for this product please contact:

T: 1 (888) 4PTGLAB (1-888-478-4522) (toll free in USA), or 1(312) 455-8498 (outside USA)

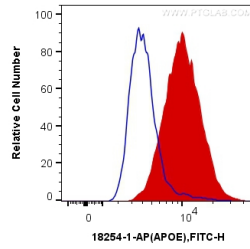
E: proteintech@ptglab.com
W: ptglab.com

This product is exclusively available under Proteintech Group brand and is not available to purchase from any other manufacturer.

Selected Validation Data



Human plasma were subjected to SDS PAGE followed by western blot with 18254-1-AP (APOE antibody) at dilution of 1:3000 incubated at room temperature for 1.5 hours.



1X10⁶ HepG2 cells were intracellularly stained with 0.4 ug Anti-Human APOE (18254-1-AP) and CoraLite®488-Conjugated AffiniPure Goat Anti-Rabbit IgG(H+L) at dilution 1:1000 (red), or 0.4 ug Control Antibody. Cells were fixed with 4% PFA and permeabilized with Flow Cytometry Perm Buffer (PF00011-C).