

For Research Use Only

# KRAS-4B-specific Polyclonal antibody

Catalog Number: 18294-1-AP



## Basic Information

### Catalog Number:

18294-1-AP

### Size:

150ul, Concentration: 213 µg/ml by Bradford method using BSA as the standard;

### Source:

Rabbit

### Isotype:

IgG

### GenBank Accession Number:

BC013572

### GeneID (NCBI):

3845

### UNIPROT ID:

P01116

### Full Name:

v-Ki-ras2 Kirsten rat sarcoma viral oncogene homolog

### Calculated MW:

21 kDa

### Purification Method:

Antigen affinity purification

### Recommended Dilutions:

IHC 1:20-1:200

IF/ICC 1:10-1:100

## Applications

### Tested Applications:

IHC, IF/ICC, ELISA

### Species Specificity:

human, mouse, rat

**Note-IHC: suggested antigen retrieval with TE buffer pH 9.0; (\*) Alternatively, antigen retrieval may be performed with citrate buffer pH 6.0**

### Positive Controls:

IHC : human pancreas tissue, human stomach cancer tissue

IF/ICC : HepG2 cells,

## Background Information

KRAS, also called p21, is a member of the Ras superfamily of proteins. It is located on human chromosome 12, and contains four coding exons and a 5' non-coding exon (PMID: 12778136). KRAS is a membrane-anchored guanosine triphosphate/guanosine diphosphate (GTP/GDP)-binding protein and is widely expressed in most human cells. Like other members of the Ras family, the KRAS protein is a GTPase, and it is involved in intracellular signal transduction and mainly responsible for EGFR-signaling activation (PMID: 19117687). KRAS mutations have been found in various malignancies, including lung adenocarcinoma, mucinous adenoma, ductal carcinoma of the pancreas and colorectal carcinoma. KRAS has two isoforms, 4A and 4B. The antibody is specific to KRAS, can't recognize NRAS and HRAS.

## Storage

### Storage:

Store at -20°C. Stable for one year after shipment.

### Storage Buffer:

PBS with 0.02% sodium azide and 50% glycerol pH 7.3.

Aliquoting is unnecessary for -20°C storage

\*\*\* 20ul sizes contain 0.1% BSA

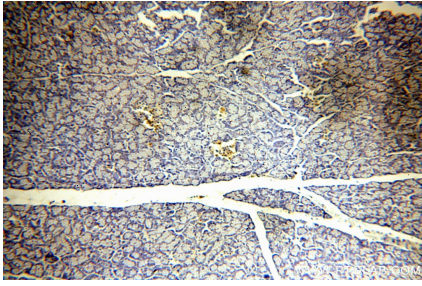
For technical support and original validation data for this product please contact:

T: 1 (888) 4PTGLAB (1-888-478-4522) (toll free in USA), or 1(312) 455-8498 (outside USA)

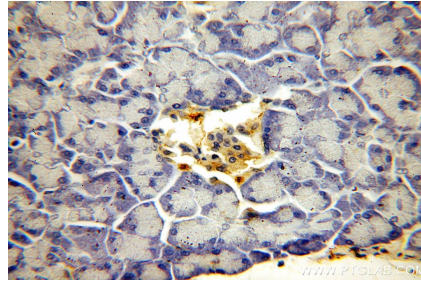
E: [proteintech@ptglab.com](mailto:proteintech@ptglab.com)  
W: [ptglab.com](http://ptglab.com)

This product is exclusively available under Proteintech Group brand and is not available to purchase from any other manufacturer.

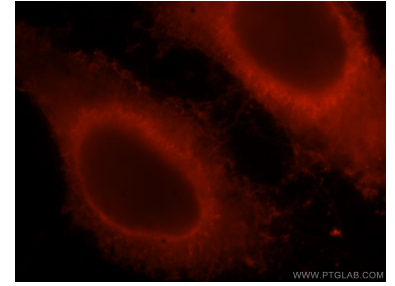
## Selected Validation Data



Immunohistochemical analysis of paraffin-embedded human pancreas using 18294-1-AP (KRAS-2B-specific antibody) at dilution of 1:50 (under 10x lens).



Immunohistochemical analysis of paraffin-embedded human pancreas using 18294-1-AP (KRAS-2B-specific antibody) at dilution of 1:50 (under 40x lens).



Immunofluorescent analysis of HepG2 cells, using KRAS antibody 18294-1-AP at 1:25 dilution and Rhodamine-labeled goat anti-rabbit IgG (red).