

For Research Use Only

CSF2RA/CD116 Polyclonal ANTIBODY



Catalog Number: 18307-1-AP

Basic Information

Catalog Number:
18307-1-AP

Size:
38 µg/150 µl

Source:
Rabbit

Isotype:
IgG

Purification Method:
Antigen affinity purification

Immunogen Catalog Number:

GenBank Accession Number:
BC071835

GeneID (NCBI):
1438

Full Name:
colony stimulating factor 2 receptor, alpha, low-affinity (granulocyte-macrophage)

Calculated MW:
47 kDa

Observed MW:
48 kDa

Recommended Dilutions:
WB 1:500-1:1000
IHC 1:20-1:200

Applications

Tested Applications:
IHC, WB, ELISA

Species Specificity:
human

Note: suggested antigen retrieval with TE buffer pH 9.0; (*) Alternatively, antigen retrieval may be performed with citrate buffer pH 6.0

Positive Controls:

WB : HepG2 cells; human placenta tissue

IHC : human placenta tissue;

Background Information

CD116, also named as CSF2RA CDw116 CSF2RAX CSF2RAY CSF2RX CSF2RY GM-CSF-R-alpha GMSFR and GMR, is a low affinity receptor for granulocyte-macrophage colony-stimulating factor. CD116 transduces a signal that results in the proliferation, differentiation, and functional activation of hematopoietic cells.

Notable Publications

Author	Pubmed ID	Journal	Application
--------	-----------	---------	-------------

Storage

Storage:
Store at -20°C. Stable for one year after shipment.
Storage Buffer:
PBS with 0.02% sodium azide and 50% glycerol pH 7.3.
Aliquoting is unnecessary for -20°C storage

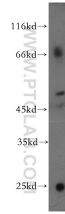
For technical support and original validation data for this product please contact:

T: 1 (888) 4PTGLAB (1-888-478-4522) (toll free in USA), or 1(312) 455-8498 (outside USA)

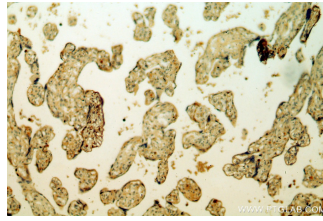
E: proteintech@ptglab.com
W: ptglab.com

This product is exclusively available under Proteintech Group brand and is not available to purchase from any other manufacturer.

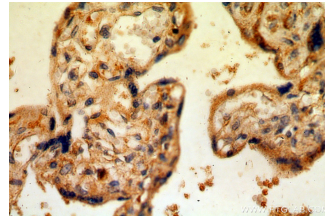
Selected Validation Data



HepG2 cells were subjected to SDS PAGE followed by western blot with 18307-1-AP(CSF2RA/CD116 antibody) at dilution of 1:600 incubated at room temperature for 1.5 hours



Immunohistochemical of paraffin-embedded human placenta using 18307-1-AP(CSF2RA/CD116 antibody) at dilution of 1:50 (under 10x lens)



Immunohistochemical of paraffin-embedded human placenta using 18307-1-AP(CSF2RA/CD116 antibody) at dilution of 1:50 (under 40x lens)