

For Research Use Only

# PLD1 Polyclonal ANTIBODY



Catalog Number: 18355-1-AP **1 Publications**

## Basic Information

**Catalog Number:**

18355-1-AP

**Size:**

150UL, Concentration: 307 µg/ml by Bradford method using BSA as the standard;

**Source:**

Rabbit

**Isotype:**

IgG

**Immunogen Catalog Number:**

AG13227

**GenBank Accession Number:**

BC068976

**GeneID (NCBI):**

5337

**Full Name:**

phospholipase D1, phosphatidylcholine-specific

**Calculated MW:**

1074 aa, 124 kDa

**Observed MW:**

120 kDa

**Purification Method:**

Antigen affinity purification

**Recommended Dilutions:**

WB 1:500-1:2000

IP 0.5-4.0 µg for IP and 1:500-1:1000 for WB

IF 1:20-1:200

## Applications

**Tested Applications:**

IF, IP, WB, ELISA

**Cited Applications:**

IF, WB

**Species Specificity:**

human, mouse, rat

**Cited Species:**

human

**Positive Controls:**

WB: HeLa cells,

IP: HeLa cells,

IF: HeLa cells,

## Background Information

PLD1(Phospholipase D1) belongs to the phospholipase D family. It is implicated in the release process of a variety of hormones, most likely at a late stage of exocytosis through the production of lipids that are essential for the fusion process and seems to be also essential for fast neurotransmitter release. PLD1 is primarily localized in vesicular structures such as endosomes, lysosomes and autophagosomes.

## Notable Publications

Author	Pubmed ID	Journal	Application
Yoon Mee-Sup MS	22024166	J Cell Biol	WB,IF

## Storage

**Storage:**

Store at -20°C. Stable for one year after shipment.

**Storage Buffer:**

PBS with 0.02% sodium azide and 50% glycerol pH 7.3.

Aliquoting is unnecessary for -20°C storage

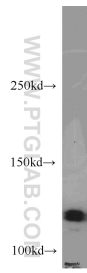
For technical support and original validation data for this product please contact:

T: 1 (888) 4PTGLAB (1-888-478-4522) (toll free in USA), or 1(312) 455-8498 (outside USA)

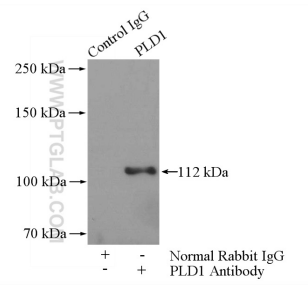
E: proteintech@ptglab.com  
W: ptglab.com

**This product is exclusively available under Proteintech Group brand and is not available to purchase from any other manufacturer.**

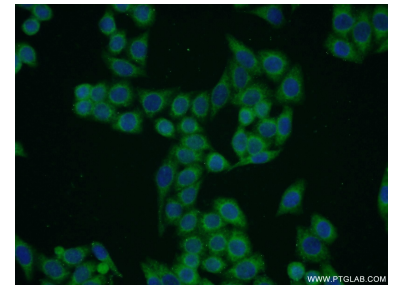
## Selected Validation Data



HeLa cells were subjected to SDS PAGE followed by western blot with 18355-1-AP (PLD1 antibody) at dilution of 1:500 incubated at room temperature for 1.5 hours.



IP Result of anti-PLD1 (IP:18355-1-AP, 4 $\mu$ g; Detection:18355-1-AP 1:500) with HeLa cells lysate 1200 $\mu$ g.



Immunofluorescent analysis of HeLa cells using 18355-1-AP (PLD1 antibody) at dilution of 1:50 and Alexa Fluor 488-conjugated AffiniPure Goat Anti-Rabbit IgG(H+L).