

For Research Use Only

# UQCRFS1 Polyclonal antibody

Catalog Number: 18443-1-AP

Featured Product

12 Publications



## Basic Information

**Catalog Number:**

18443-1-AP

**Size:**

150UL, Concentration: 220 µg/ml by Bradford method using BSA as the standard;

**Source:**

Rabbit

**Isotype:**

IgG

**Immunogen Catalog Number:**

AG13315

**GenBank Accession Number:**

BC010035

**GeneID (NCBI):**

7386

**Full Name:**

ubiquinol-cytochrome c reductase, Rieske iron-sulfur polypeptide 1

**Calculated MW:**

30 kDa

**Observed MW:**

25 kDa

**Purification Method:**

Antigen affinity purification

**Recommended Dilutions:**

WB 1:1000-1:8000

IP 0.5-4.0 µg for IP and 1:500-1:2000 for WB

IHC 1:50-1:500

## Applications

**Tested Applications:**

IHC, IP, WB, ELISA

**Cited Applications:**

IHC, WB

**Species Specificity:**

human, mouse, rat

**Cited Species:**

human, mouse

**Note-IHC: suggested antigen retrieval with TE buffer pH 9.0; (\*) Alternatively, antigen retrieval may be performed with citrate buffer pH 6.0**

**Positive Controls:**

**WB:** MCF-7 cells, mouse brain tissue, mouse heart tissue, HEK-293 cells, HeLa cells, A2780 cells, rat heart tissue

**IP:** mouse heart tissue,

**IHC:** human kidney tissue, human heart tissue

## Background Information

The ubiquinol cytochrome c reductase UQCRFS1 is a key subunit of the cytochrome bc1 complex (complex III) of the mitochondrial respiratory chain. The UQCRFS1 gene encode a 30 kDa protein with a transit peptide and it appears to be involved in development of more aggressive phenotype of breast cancer (PMID:15047214). UQCRFS1 is also named as RISP, complex III subunit 5, cytochrome b-c1 complex subunit 5 and rieske iron-sulfur protein. This antibody is specific to UQCRFS1.

## Notable Publications

| Author         | Pubmed ID | Journal     | Application |
|----------------|-----------|-------------|-------------|
| Rufeng Zhang   | 31530015  | FASEB J     | WB          |
| Jing Zhang     | 26492917  | EMBO J      | WB          |
| Terence E Ryan | 30385731  | JCI Insight | WB          |

## Storage

**Storage:**

Store at -20°C. Stable for one year after shipment.

**Storage Buffer:**

PBS with 0.02% sodium azide and 50% glycerol pH 7.3.

Aliquoting is unnecessary for -20°C storage

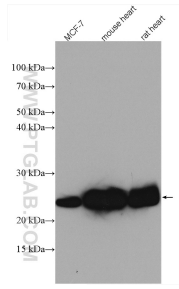
For technical support and original validation data for this product please contact:

T: 1 (888) 4PTGLAB (1-888-478-4522) (toll free in USA), or 1(312) 455-8498 (outside USA)

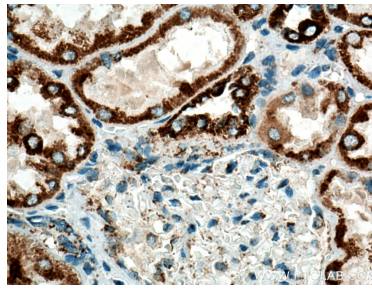
E: [proteintech@ptglab.com](mailto:proteintech@ptglab.com)  
W: [ptglab.com](http://ptglab.com)

**This product is exclusively available under Proteintech Group brand and is not available to purchase from any other manufacturer.**

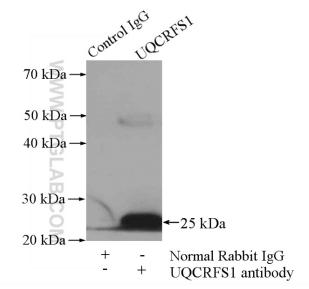
## Selected Validation Data



Various lysates were subjected to SDS PAGE followed by western blot with 18443-1-AP (UQCRFS1 antibody) at dilution of 1:4000 incubated at room temperature for 1.5 hours.



Immunohistochemical analysis of paraffin-embedded human kidney tissue slide using 18443-1-AP (UQCRFS1 antibody) at dilution of 1:200 (under 40x lens). Heat mediated antigen retrieval with Tris-EDTA buffer (pH 9.0).



IP Result of anti-UQCRFS1 (IP:18443-1-AP, 4ug; Detection:18443-1-AP 1:1000) with mouse heart tissue lysate 4000ug.