

For Research Use Only

Melan-A Polyclonal antibody

Catalog Number: 18472-1-AP



Basic Information

Catalog Number:

18472-1-AP

Size:

150UL, Concentration: 400 µg/ml by Nanodrop and 267 µg/ml by Bradford method using BSA as the standard;

Source:

Rabbit

Isotype:

IgG

Immunogen Catalog Number:

AG13346

GenBank Accession Number:

BC014423

GeneID (NCBI):

2315

Full Name:

melan-A

Calculated MW:

13 kDa

Observed MW:

13-20 kDa

Purification Method:

Antigen affinity purification

Recommended Dilutions:

WB 1:200-1:1000

IHC 1:2000-1:8000

Applications

Tested Applications:

IHC, WB, ELISA

Species Specificity:

human, mouse

Note-IHC: suggested antigen retrieval with TE buffer pH 9.0; (*) Alternatively, antigen retrieval may be performed with citrate buffer pH 6.0

Positive Controls:

WB: mouse eye tissue,

IHC: human malignant melanoma tissue, human skin tissue

Background Information

Melan-A is a palmitoylated integral membrane protein of 118 amino acids with a short amino-terminal luminal domain and a longer carboxy-terminal cytoplasmic domain. The protein does not possess any detectable enzymatic activity and has not been linked to any of the numerous genetic defects that affect skin pigmentation. Melan-A is new immunohistochemical markers that can be used in the diagnosis of melanocytic lesions. (PMID: 15703212, PMID: 17445277)

Storage

Storage:

Store at -20°C. Stable for one year after shipment.

Storage Buffer:

PBS with 0.02% sodium azide and 50% glycerol pH 7.3.

Aliquoting is unnecessary for -20°C storage

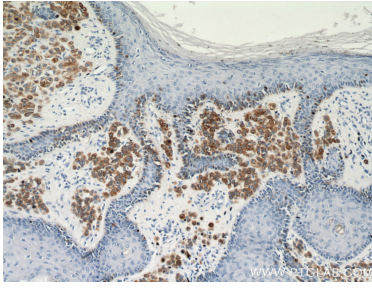
For technical support and original validation data for this product please contact:

T: 1 (888) 4PTGLAB (1-888-478-4522) (toll free in USA), or 1(312) 455-8498 (outside USA)

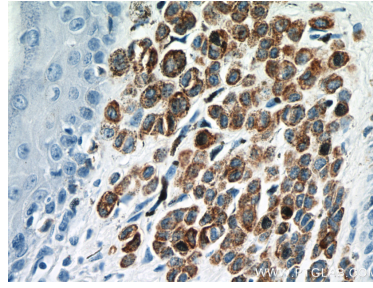
E: proteintech@ptglab.com
W: ptglab.com

This product is exclusively available under Proteintech Group brand and is not available to purchase from any other manufacturer.

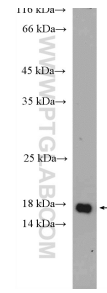
Selected Validation Data



Immunohistochemical analysis of paraffin-embedded human malignant melanoma tissue slide using 18472-1-AP (MLANA antibody) at dilution of 1:4000 (under 10x lens).



Immunohistochemical analysis of paraffin-embedded human malignant melanoma tissue slide using 18472-1-AP (MLANA antibody) at dilution of 1:4000 (under 40x lens).



mouse eye tissue were subjected to SDS PAGE followed by western blot with 18472-1-AP (MLANA Antibody) at dilution of 1:300 incubated at room temperature for 1.5 hours.