

For Research Use Only

# PRUNE Polyclonal ANTIBODY



Catalog Number: 18537-1-AP

## Basic Information

**Catalog Number:**

18537-1-AP

**Size:**

150UL, Concentration: 133 µg/ml by Bradford method using BSA as the standard;

**Source:**

Rabbit

**Isotype:**

IgG

**Immunogen Catalog Number:**

AG13275

**GenBank Accession Number:**

BC025304

**GeneID (NCBI):**

58497

**Full Name:**

prune homolog (Drosophila)

**Calculated MW:**

453 aa, 50 kDa

**Observed MW:**

60 kDa

**Purification Method:**

Antigen affinity purification

**Recommended Dilutions:**

WB 1:1000-1:4000

IP 0.5-4.0 µg for IP and 1:500-1:1000 for WB

IHC 1:20-1:200

IF 1:10-1:100

## Applications

**Tested Applications:**

IF, IHC, IP, WB, ELISA

**Species Specificity:**

human, mouse, rat

**Note-IHC: suggested antigen retrieval with TE buffer pH 9.0; (\*) Alternatively, antigen retrieval may be performed with citrate buffer pH 6.0**

**Positive Controls:**

WB: HepG2 cells, A431 cells, MCF-7 cells

IP: HepG2 cells,

IHC: human liver cancer tissue,

IF: HepG2 cells,

## Background Information

### Storage

**Storage:**

Store at -20°C. Stable for one year after shipment.

**Storage Buffer:**

PBS with 0.02% sodium azide and 50% glycerol pH 7.3.

Aliquoting is unnecessary for -20°C storage

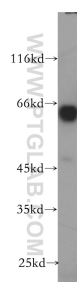
For technical support and original validation data for this product please contact:

T: 1 (888) 4PTGLAB (1-888-478-4522) (toll free in USA), or 1(312) 455-8498 (outside USA)

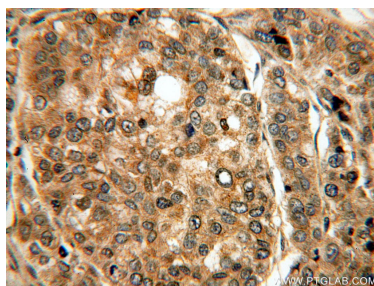
E: [proteintech@ptglab.com](mailto:proteintech@ptglab.com)  
W: [ptglab.com](http://ptglab.com)

**This product is exclusively available under Proteintech Group brand and is not available to purchase from any other manufacturer.**

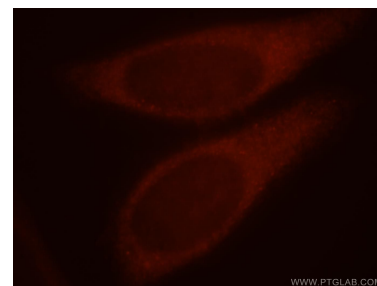
## Selected Validation Data



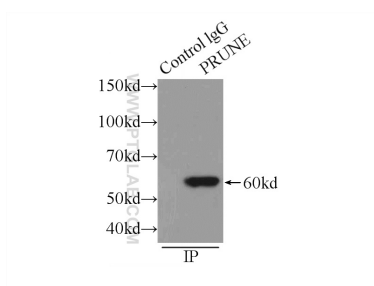
HepG2 cells were subjected to SDS PAGE followed by western blot with 18537-1-AP (PRUNE antibody) at dilution of 1:600 incubated at room temperature for 1.5 hours.



Immunohistochemical analysis of paraffin-embedded human liver cancer using 18537-1-AP (PRUNE antibody) at dilution of 1:100 (under 40x lens).



Immunofluorescent analysis of HepG2 cells, using PRUNE antibody 18537-1-AP at 1:25 dilution and Rhodamine-labeled goat anti-rabbit IgG (red).



IP Result of anti-PRUNE (IP:18537-1-AP, 3ug; Detection:18537-1-AP 1:500) with HepG2 cells lysate 1720ug.