

For Research Use Only

# EPHA1-specific Polyclonal antibody

Catalog Number: 18698-1-AP

1 Publications



## Basic Information

|  |  |  |
|--|--|--|
| <b>Catalog Number:</b><br>18698-1-AP   | <b>GenBank Accession Number:</b><br>BC130291 | <b>Purification Method:</b><br>Antigen affinity purification |
| <b>Size:</b><br>150ul , Concentration: 200 ug/ml by Nanodrop and 167 ug/ml by Bradford method using BSA as the standard; | <b>GeneID (NCBI):</b><br>2041                | <b>Recommended Dilutions:</b><br>WB: 1:500-1:2000            |
| <b>Source:</b><br>Rabbit   | <b>UNIPROT ID:</b><br>P21709                 | <b>IHC:</b> 1:50-1:500                                       |
| <b>Isotype:</b><br>IgG   | <b>Full Name:</b><br>EPH receptor A1         | <b>IF/ICC:</b> 1:50-1:500                                    |
|  | <b>Calculated MW:</b><br>108 kDa             |  |
|  | <b>Observed MW:</b><br>150 kDa               |  |

## Applications

|  |   |
|--|---|
| <b>Tested Applications:</b><br>WB, IHC, IF/ICC, ELISA  | <b>Positive Controls:</b>               |
| <b>Cited Applications:</b><br>WB, IHC, IP  | <b>WB :</b> A549 cells, HeLa cells      |
| <b>Species Specificity:</b><br>human, mouse  | <b>IHC :</b> human liver cancer tissue, |
| <b>Cited Species:</b><br>human, mouse  | <b>IF/ICC :</b> A549 cells,             |
| <b>Note-IHC: suggested antigen retrieval with TE buffer pH 9.0; (*) Alternatively, antigen retrieval may be performed with citrate buffer pH 6.0</b> |   |

## Background Information

EPHA1, also named as EPH, EPHT and EPHT1, belongs to ephrin receptor subfamily of the protein-tyrosine kinase family. EPH and EPH-related receptors have been implicated in mediating developmental events, particularly in the nervous system. Receptors in the EPH subfamily typically have a single kinase domain and an extracellular region containing a Cys-rich domain and 2 fibronectin type III repeats. Ligands in the ephrin-A subclass, including the prototype family member ephrin-A1 (B61), are membrane associated through glycosylphosphatidyl-inositol linkages, whereas ephrin-B subclass consists of ligands with transmembrane domains. The general role of the Eph family is in mediating repulsive cell-cell interaction.

## Notable Publications

| Author    | Pubmed ID | Journal | Application |
|-----------|-----------|---------|-------------|
| Shuang Li | 39838173  | EMBO J  | WB,IP,IHC   |

## Storage

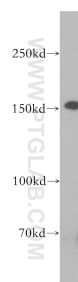
**Storage:**  
Store at -20°C. Stable for one year after shipment.  
**Storage Buffer:**  
PBS with 0.02% sodium azide and 50% glycerol, pH7.3  
**Aliquoting is unnecessary for -20°C storage**

\*\*\* 20ul sizes contain 0.1% BSA

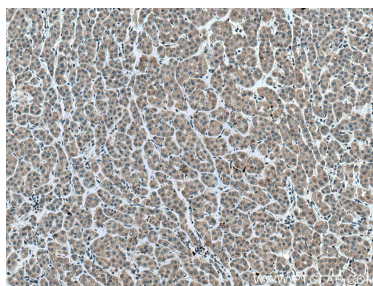
For technical support and original validation data for this product please contact:  
T: 1 (888) 4PTGLAB (1-888-478-4522) (toll free in USA), or 1(312) 455-8498 (outside USA)  
E: [proteintech@ptglab.com](mailto:proteintech@ptglab.com)  
W: [ptglab.com](http://ptglab.com)

This product is exclusively available under Proteintech Group brand and is not available to purchase from any other manufacturer.

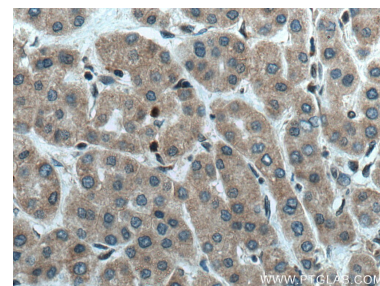
## Selected Validation Data



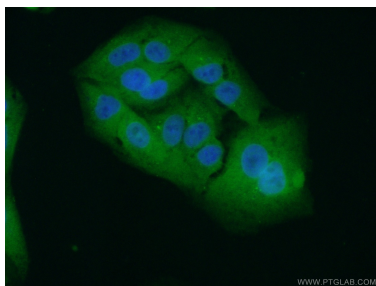
A549 cells were subjected to SDS PAGE followed by western blot with 18698-1-AP (EPHA1-specific antibody) at dilution of 1:800 incubated at room temperature for 1.5 hours.



Immunohistochemical analysis of paraffin-embedded human liver cancer tissue slide using 18698-1-AP (EPHA1-specific antibody) at dilution of 1:200 (under 10x lens). Heat mediated antigen retrieval with Tris-EDTA buffer (pH 9.0).



Immunohistochemical analysis of paraffin-embedded human liver cancer tissue slide using 18698-1-AP (EPHA1-specific antibody) at dilution of 1:200 (under 40x lens). Heat mediated antigen retrieval with Tris-EDTA buffer (pH 9.0).



Immunofluorescent analysis of (10% Formaldehyde) fixed A549 cells using 18698-1-AP (EPHA1-specific antibody) at dilution of 1:50 and Alexa Fluor 488-conjugated Goat Anti-Rabbit IgG(H+L).