

For Research Use Only

GABARAPL1 Polyclonal ANTIBODY



Catalog Number: 18721-1-AP **1 Publications**

Basic Information

Catalog Number: 18721-1-AP	GenBank Accession Number: NM_031412	Purification Method: Antigen affinity purification
Size: 150UL, Concentration: 247 µg/ml by Bradford method using BSA as the standard;	GeneID (NCBI): 23710	Recommended Dilutions: WB 1:500-1:2000 IHC 1:20-1:200
Source: Rabbit	Full Name: GABA(A) receptor-associated protein like 1	
Isotype: IgG	Calculated MW: 14 kDa	
	Observed MW: 17 kDa	

Applications

Tested Applications: FC, IHC, WB, ELISA	Positive Controls: WB : mouse kidney tissue, human heart tissue, human spleen tissue, mouse brain tissue, mouse liver tissue IHC : human kidney tissue,
Cited Applications: WB	
Species Specificity: human, mouse, rat	
Cited Species: human	

Note-IHC: suggested antigen retrieval with TE buffer pH 9.0; (*) Alternatively, antigen retrieval may be performed with citrate buffer pH 6.0

Background Information

GABARAPL1 (GABARAP-like protein 1), also named as ATG8, GEC1, APG8L, ATG8L and APG8-LIKE, is a member of GABARP (GABAA receptor-associated protein) family. GABARAPL1 was initially identified as estrogen-regulated gene and the protein acts in receptor and vesicle transport. It's also involved in the process of autophagy like GABARAP and GABARAPL2, and may be considered as an autophagic marker. It is expressed at very high levels in the brain, heart, peripheral blood leukocytes, liver, kidney, placenta and skeletal muscle. And at very low levels in thymus and small intestine. The antibody is specific to GABARAPL1, and it doesn't recognize the recombinant GABARAP and GABARAPL2.

Notable Publications

Author	Pubmed ID	Journal	Application
Le Grand Jaclyn Nicole JN	21862879	Autophagy	WB

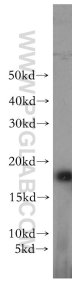
Storage

Storage:
Store at -20°C. Stable for one year after shipment.
Storage Buffer:
PBS with 0.02% sodium azide and 50% glycerol pH 7.3.
Aliquoting is unnecessary for -20°C storage

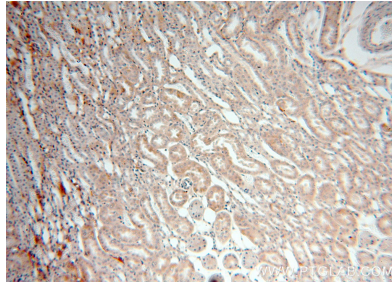
For technical support and original validation data for this product please contact:
T: 1 (888) 4PTGLAB (1-888-478-4522) (toll free in USA), or 1(312) 455-8498 (outside USA)
E: proteintech@ptglab.com
W: ptglab.com

This product is exclusively available under Proteintech Group brand and is not available to purchase from any other manufacturer.

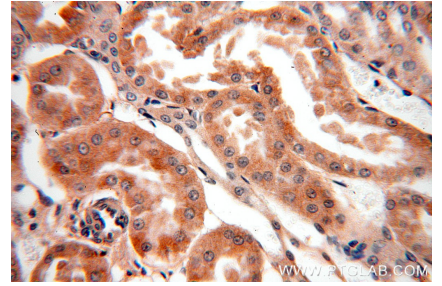
Selected Validation Data



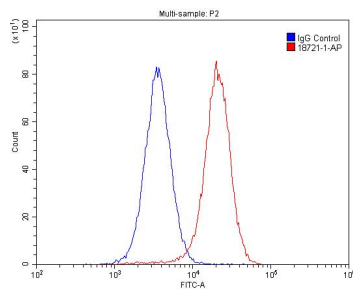
mouse kidney tissue were subjected to SDS PAGE followed by western blot with 18721-1-AP (GABARAPL1 antibody) at dilution of 1:500 incubated at room temperature for 1.5 hours.



Immunohistochemical analysis of paraffin-embedded human kidney using 18721-1-AP (GABARAPL1 antibody) at dilution of 1:100 (under 10x lens).



Immunohistochemical analysis of paraffin-embedded human kidney using 18721-1-AP (GABARAPL1 antibody) at dilution of 1:100 (under 40x lens).



1X10⁶ HepG2 cells were stained with 0.2ug GABARAPL1 antibody (18721-1-AP, red) and control antibody (blue). Fixed with 4% PFA blocked with 3% BSA (30 min). Alexa Fluor 488-conjugated AffiniPure Goat Anti-Rabbit IgG(H+L) with dilution 1:1500.