

For Research Use Only

# LC3C-Specific Polyclonal ANTIBODY



Catalog Number: 18726-1-AP **3 Publications**

## Basic Information

**Catalog Number:** 18726-1-AP  
**Size:** 150UL, Concentration: 233 µg/ml by Bradford method using BSA as the standard;  
**Source:** Rabbit  
**Isotype:** IgG

**GenBank Accession Number:** NM\_001004343  
**GeneID (NCBI):** 440738  
**Full Name:** microtubule-associated protein 1 light chain 3 gamma  
**Calculated MW:** 17 kDa

**Purification Method:** Antigen affinity purification  
**Recommended Dilutions:** WB 1:500-1:1000

## Applications

**Tested Applications:** WB, ELISA  
**Cited Applications:** IF, WB  
**Species Specificity:** human  
**Cited Species:** human

**Positive Controls:**  
WB: Recombinant protein,

## Background Information

LC3C, also named as MAP1LC3C, belongs to the MAP1 LC3 family. It is the human homolog of yeast Atg8 and is involved in the formation of autophagosomal vacuoles, called autophagosomes. LC3C is produced by the proteolytic cleavage after the conserved C-terminal Gly residue. The antibody is specific to the prepeptide of LC3C.

## Notable Publications

Author	Pubmed ID	Journal	Application
Jonathan A Stefely	31971854	Autophagy	WB,IF
Anuradha Dhingra	29721994	Adv Exp Med Biol	WB
Michael I Koukourakis	26378792	PLoS One	WB, IF

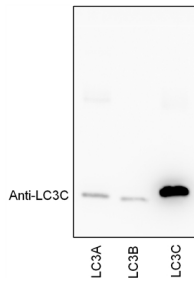
## Storage

**Storage:** Store at -20°C. Stable for one year after shipment.  
**Storage Buffer:** PBS with 0.1% sodium azide and 50% glycerol pH 7.3.  
Aliquoting is unnecessary for -20°C storage

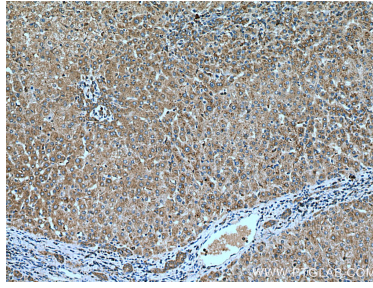
For technical support and original validation data for this product please contact:  
T: 1 (888) 4PTGLAB (1-888-478-4522) (toll free in USA), or 1(312) 455-8498 (outside USA)  
E: proteintech@ptglab.com  
W: ptglab.com

This product is exclusively available under Proteintech Group brand and is not available to purchase from any other manufacturer.

## Selected Validation Data



WB results of LC3C-specific antibody with Recombinant protein LC3A, LC3B and LC3C, by Dr. Christos Zois.



Immunohistochemical analysis of paraffin-embedded human liver tissue slide using 18726-1-AP (LC3C-Specific antibody) at dilution of 1:200 (under 10x lens). Heat mediated antigen retrieval with Tris-EDTA buffer (pH 9.0).