

For Research Use Only

DNA2 Polyclonal antibody

Catalog Number: 18727-1-AP

Featured Product

14 Publications



Basic Information

Catalog Number:

18727-1-AP

Size:

150ul, Concentration: 550 ug/ml by Nanodrop;

Source:

Rabbit

Isotype:

IgG

GenBank Accession Number:

NM_001080449

GeneID (NCBI):

1763

UNIPROT ID:

P51530

Full Name:

DNA replication helicase 2 homolog (yeast)

Calculated MW:

120 kDa

Observed MW:

120-130 kDa

Purification Method:

Antigen affinity purification

Recommended Dilutions:

WB: 1:500-1:1000

IP: 0.5-4.0 ug for 1.0-3.0 mg of total protein lysate

IHC: 1:50-1:500

IF/ICC: 1:200-1:800

Applications

Tested Applications:

WB, IHC, IF/ICC, IP, ELISA

Cited Applications:

WB, IHC, IF

Species Specificity:

human, mouse

Cited Species:

human, mouse

Positive Controls:

WB: mouse liver tissue, mouse thymus tissue

IP: mouse liver tissue,

IHC: human cervical cancer tissue,

IF/ICC: HepG2 cells,

Note-IHC: suggested antigen retrieval with TE buffer pH 9.0; (*) Alternatively, antigen retrieval may be performed with citrate buffer pH 6.0

Background Information

DNA2 (DNA replication ATP-dependent helicase/nuclease DNA2) is also named as DNA2L, KIAA0083 and belongs to the DNA2/NAM7 helicase family. This protein includes 2 domains: DNA replication nuclease and DNA replication ATP-dependent helicase. It is a conserved helicase/nuclease involved in the maintenance of mitochondrial and nuclear DNA stability and it can interact with DNA polymerase gamma and stimulating its activity. It can also process intermediate 5' flap structures occurring in DNA replication long-patch base excision repair in mitochondria. It has 4 isoforms produced by alternative splicing. This antibody is specific to DNA2.

Notable Publications

Author	Pubmed ID	Journal	Application
Eric Hervouet	26474850	BMC Cancer	WB
Yongqu Lu	33134313	Front Mol Biosci	IHC
Ahmed Emam	35817959	Nat Cell Biol	WB, IF

Storage

Storage:

Store at -20°C. Stable for one year after shipment.

Storage Buffer:

PBS with 0.02% sodium azide and 50% glycerol, pH7.3

Aliquoting is unnecessary for -20°C storage

*** 20ul sizes contain 0.1% BSA

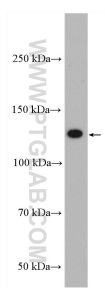
For technical support and original validation data for this product please contact:

T: 1 (888) 4PTGLAB (1-888-478-4522) (toll free in USA), or 1(312) 455-8498 (outside USA)

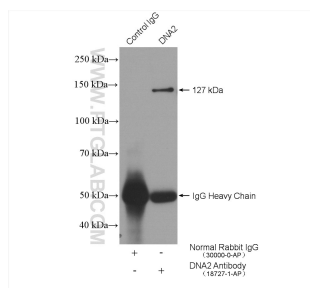
E: proteintech@ptglab.com
W: ptglab.com

This product is exclusively available under Proteintech Group brand and is not available to purchase from any other manufacturer.

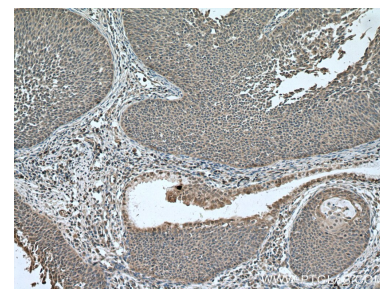
Selected Validation Data



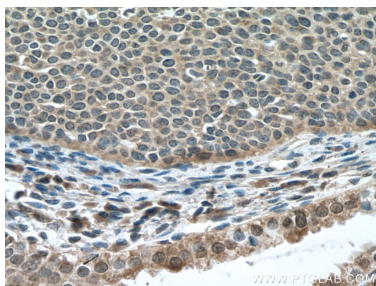
mouse liver tissue were subjected to SDS PAGE followed by western blot with 18727-1-AP (DNA2 antibody) at dilution of 1:600 incubated at room temperature for 1.5 hours.



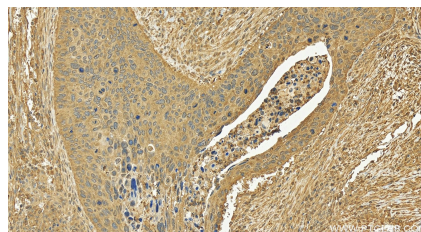
IP result of anti-DNA2 (IP:18727-1-AP, 4ug; Detection:18727-1-AP 1:300) with mouse liver tissue lysate 4800 ug.



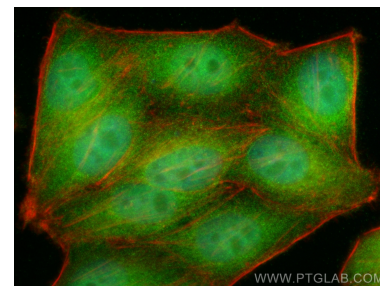
Immunohistochemical analysis of paraffin-embedded human cervical cancer tissue slide using 18727-1-AP (DNA2 antibody) at dilution of 1:200 (under 10x lens. Heat mediated antigen retrieval with Tris-EDTA buffer (pH 9.0).



Immunohistochemical analysis of paraffin-embedded human cervical cancer tissue slide using 18727-1-AP (DNA2 antibody) at dilution of 1:200 (under 40x lens. Heat mediated antigen retrieval with Tris-EDTA buffer (pH 9.0).



Immunohistochemical analysis of paraffin-embedded human cervical cancer tissue slide using 18727-1-AP (DNA2 antibody) at dilution of 1:200 (under 20x lens). Heat mediated antigen retrieval with Tris-EDTA buffer (pH 9.0).



Immunofluorescent analysis of (4% PFA) fixed HepG2 cells using DNA2 antibody (18727-1-AP) at dilution of 1:400 and CoraLite®488-Conjugated AffiniPure Goat Anti-Rabbit IgG(H+L) (SA00013-2), CL594-Phalloidin (red).