

For Research Use Only

CEP192 Polyclonal antibody

Catalog Number: 18832-1-AP **5 Publications**



Basic Information

Catalog Number:

18832-1-AP

Size:

150ul, Concentration: 900 µg/ml by Nanodrop and 247 µg/ml by Bradford method using BSA as the standard;

Source:

Rabbit

Isotype:

IgG

GenBank Accession Number:

BC144481

GeneID (NCBI):

55125

Full Name:

centrosomal protein 192kDa

Calculated MW:

213 kDa

Observed MW:

250-300 kDa

Purification Method:

Antigen affinity purification

Recommended Dilutions:

IP 0.5-4.0 ug for IP and 1:200-1:1000

for WB

IHC 1:50-1:500

IF 1:20-1:200

Applications

Tested Applications:

IF, IHC, IP, ELISA

Cited Applications:

IF

Species Specificity:

human

Cited Species:

human, mouse

Note-IHC: suggested antigen retrieval with TE buffer pH 9.0; (*) Alternatively, antigen retrieval may be performed with citrate buffer pH 6.0

Positive Controls:

IP: HeLa cells,

IHC: human liver cancer tissue,

IF: HeLa cells,

Background Information

CEP192, also named as PP8407 and KIAA1569, interacts with SHBG. It is required for mitotic centrosome and spindle assembly. CEP192 appears to be a major regulator of pericentriolar material (PCM) recruitment, centrosome maturation, and centriole duplication.

Notable Publications

Author	Pubmed ID	Journal	Application
Alyssa C Rezey	31101859	Sci Rep	IF
Alan L Jiao	30538148	RNA	IF
Cecilia S Blengini	33901174	PLoS Genet	IF

Storage

Storage:

Store at -20°C. Stable for one year after shipment.

Storage Buffer:

PBS with 0.02% sodium azide and 50% glycerol pH 7.3.

Aliquoting is unnecessary for -20°C storage

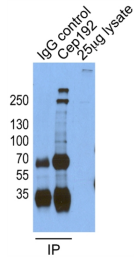
For technical support and original validation data for this product please contact:

T: 1 (888) 4PTGLAB (1-888-478-4522) (toll free in USA), or 1(312) 455-8498 (outside USA)

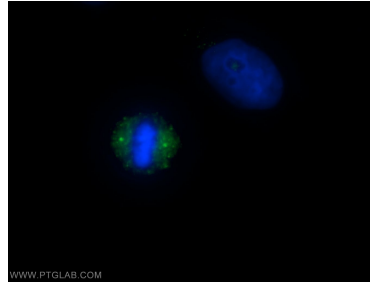
E: proteintech@ptglab.com
W: ptglab.com

This product is exclusively available under Proteintech Group brand and is not available to purchase from any other manufacturer.

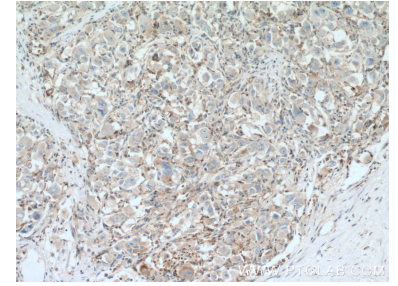
Selected Validation Data



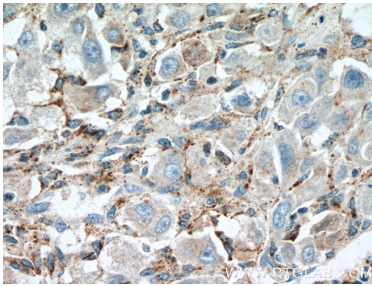
IP result of anti-CEP192 (18832-1-AP for IP and Detection) with HeLa cells.



Immunofluorescent analysis of HeLa cells using 18832-1-AP (CEP192 antibody) at dilution of 1:50 and Alexa Fluor 488-conjugated AffiniPure Goat Anti-Rabbit IgG(H+L).



Immunohistochemical analysis of paraffin-embedded human liver cancer tissue slide using 18832-1-AP (CEP192 antibody) at dilution of 1:200 (under 10x lens). Heat mediated antigen retrieval with Tris-EDTA buffer (pH 9.0).



Immunohistochemical analysis of paraffin-embedded human liver cancer tissue slide using 18832-1-AP (CEP192 antibody) at dilution of 1:200 (under 40x lens). Heat mediated antigen retrieval with Tris-EDTA buffer (pH 9.0).