

# SORCS1

## Polyclonal ANTIBODY

Catalog Number: 18839-1-AP

### Basic Information

<b>Catalog Number:</b> 18839-1-AP	<b>GenBank Accession Number:</b> BC131597	<b>Recommended Dilutions:</b> WB 1:500-1:1000
<b>Size:</b> 35 µg/150 µl	<b>GeneID (NCBI):</b> 114815	
<b>Source:</b> Rabbit	<b>Full Name:</b> sortilin-related VPS10 domain containing receptor 1	
<b>Isotype:</b> IgG	<b>Calculated MW:</b> 1168aa, 130 kDa	
<b>Purification Method:</b> Antigen affinity purification	<b>Observed MW:</b> 130 kDa, 60-80 kDa	
<b>Immunogen Catalog Number:</b>		

### Applications

**Tested Applications:**  
FC, WB, ELISA

**Species Specificity:**  
human, mouse

**Note: suggested antigen retrieval with TE buffer pH 9.0; (\*) Alternatively, antigen retrieval may be performed with citrate buffer pH 6.0**

**Positive Controls:**

WB : Y79 cells; HEK-293 cells, mouse brain tissue

### Background Information

SorCS1 is a 130 kDa type I transmembrane protein, belonging to Vps10p-domain (Vps10p-D) receptor family that comprises an N-terminal Vps10p-D, a leucine-rich domain, a single transmembrane domain, and a short cytoplasmic domain. SorCS1 is synthesized as a proprotein, which is converted to the mature receptor in late Golgi compartments by cleavage of the N-terminal propeptide. Alternative splicing of human SorCS1 results in four isoforms with different cytoplasmic domains and differential expression in tissues. This antibody was generated against the C-terminal region of human SorCS1 and recognizes various forms of SorCS1. Multiple bands around 100-130 kDa as well as 60-80 kDa have been detected in Y79 cells by western blot assay.

### Notable Publications

Author	Pubmed ID	Journal	Application

### Storage

**Storage:**  
Store at -20°C. Stable for one year after shipment.  
**Storage Buffer:**  
PBS with 0.1% sodium azide and 50% glycerol pH 7.3.  
Aliquoting is unnecessary for -20°C storage

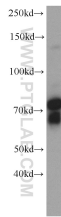
For technical support and original validation data for this product please contact:

T: 1 (888) 4PTGLAB (1-888-478-4522) (toll free in USA), or 1(312) 455-8498 (outside USA)

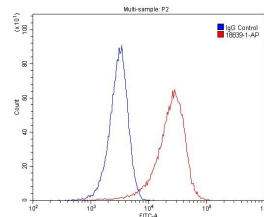
E: [proteintech@ptglab.com](mailto:proteintech@ptglab.com)  
W: [ptglab.com](http://ptglab.com)

This product is exclusively available under Proteintech Group brand and is not available to purchase from any other manufacturer.

## Selected Validation Data



Y79 cells were subjected to SDS PAGE followed by western blot with 18839-1-AP(SORCS1 antibody) at dilution of 1:500 incubated at room temperature for 1.5 hours



1X10<sup>6</sup> HeLa cells were stained with 0.2 $\mu$ g SORCS1 antibody (18839-1-AP red) and control antibody (blue). Fixed with 4% PFA blocked with 3% BSA (30 min), Alexa Fluor 488-conjugated AffiniPure Goat Anti-Rabbit IgG(H+L) with dilution 1:1500.