

For Research Use Only

RBM16 Polyclonal antibody

Catalog Number: 18893-1-AP



Basic Information

Catalog Number:

18893-1-AP

Size:

150ul, Concentration: 400 ug/ml by Nanodrop and 333 ug/ml by Bradford method using BSA as the standard;

Source:

Rabbit

Isotype:

IgG

Immunogen Catalog Number:

AG13499

GenBank Accession Number:

BC070071

GeneID (NCBI):

22828

UNIPROT ID:

Q9UPN6

Full Name:

RNA binding motif protein 16

Calculated MW:

1271 aa, 141 kDa

Observed MW:

170 kDa

Purification Method:

Antigen affinity purification

Recommended Dilutions:

WB: 1:2000-1:10000

IP: 0.5-4.0 ug for 1.0-3.0 mg of total protein lysate

IHC: 1:50-1:500

IF/ICC: 1:200-1:800

Applications

Tested Applications:

WB, IHC, IF/ICC, IP, ELISA

Species Specificity:

human, mouse

Note-IHC: suggested antigen retrieval with TE buffer pH 9.0; (*) Alternatively, antigen retrieval may be performed with citrate buffer pH 6.0

Positive Controls:

WB: A549 cells, HeLa cells, NIH/3T3 cells, L02 cells, HT-1080 cells, THP-1 cells

IP: HeLa cells,

IHC: human testis tissue, human cervical cancer tissue

IF/ICC: HeLa cells, HepG2 cells

Background Information

RBM16, also named as SCAF8, CCAP7, KIAA1116, is a 1271 amino acid protein, which interacts with POLR2A. RBM16 may play a role in mRNA processing. Immunoblot analysis of the total rat liver nuclear and nuclear matrix protein fractions revealed a single band with an apparent molecular mass of 170 kDa. While the apparent molecular mass is slightly larger than the 140 kDa predicted from the cDNA sequence, we note that the protein is rich in proline residues (10%) and therefore may display aberrant mobility in SDS gel electrophoresis. (PMID: 9528809)

Storage

Storage:

Store at -20°C. Stable for one year after shipment.

Storage Buffer:

PBS with 0.02% sodium azide and 50% glycerol, pH7.3

Aliquoting is unnecessary for -20°C storage

*** 20ul sizes contain 0.1% BSA

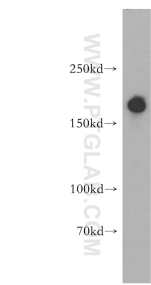
For technical support and original validation data for this product please contact:

T: 1 (888) 4PTGLAB (1-888-478-4522) (toll free in USA), or 1(312) 455-8498 (outside USA)

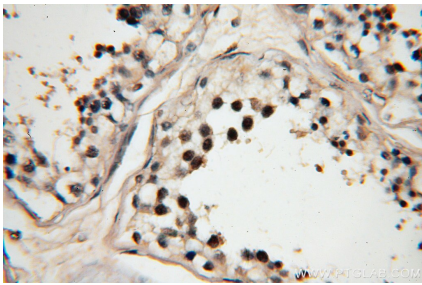
E: proteintech@ptglab.com
W: ptglab.com

This product is exclusively available under Proteintech Group brand and is not available to purchase from any other manufacturer.

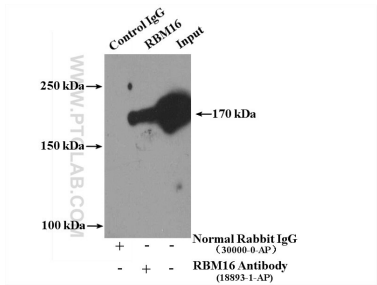
Selected Validation Data



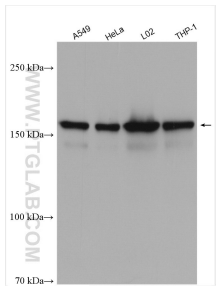
HT-1080 cells were subjected to SDS PAGE followed by western blot with 18893-1-AP (RBM16 antibody) at dilution of 1:2000 incubated at room temperature for 1.5 hours.



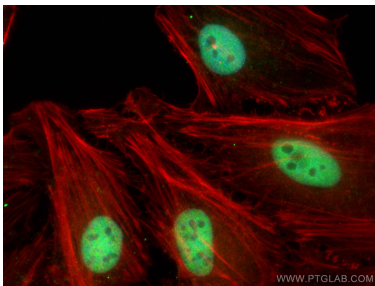
Immunohistochemical analysis of paraffin-embedded human testis using 18893-1-AP (RBM16 antibody) at dilution of 1:200 (under 40x lens).



IP result of anti-RBM16 (IP:18893-1-AP, 4ug; Detection:18893-1-AP 1:800) with HeLa cells lysate 3600ug.



Various lysates were subjected to SDS PAGE followed by western blot with 18893-1-AP (RBM16 antibody) at dilution of 1:5000 incubated at room temperature for 1.5 hours.



Immunofluorescent analysis of (4% PFA) fixed HeLa cells using RBM16 antibody (18893-1-AP) at dilution of 1:400 and CoraLite®488-Conjugated Goat Anti-Rabbit IgG(H+L) (SA00013-2), CL594-phalloidin (red).