

For Research Use Only

CEP170/CEP170L Polyclonal antibody



Catalog Number: 18899-1-AP

Basic Information

Catalog Number: 18899-1-AP	GenBank Accession Number: BC014590	Purification Method: Antigen affinity purification
Size: 150UL, Concentration: 700 µg/ml by Nanodrop and 400 µg/ml by Bradford method using BSA as the standard;	GeneID (NCBI): 645455	Recommended Dilutions: WB 1:500-1:2000 IF 1:10-1:100
Source: Rabbit	Full Name: centrosomal protein 170kDa-like	
Isotype: IgG	Calculated MW: 170 kDa	
Immunogen Catalog Number: AG13532	Observed MW: 170-200 kDa	

Applications

Tested Applications: IF, WB, ELISA	Positive Controls:
Species Specificity: human, mouse, rat	WB: HeLa cells, mouse testis tissue, rat testis tissue IF: HeLa cells,

Background Information

CEP170, also named as FAM68A, KAB and KIAA0470, is a fork head-associated (FHA) domain protein. CEP170L is a part of CEP170. The gene CEP170 has some isoforms with MW 170-200 kDa, 160 kDa and some fragments 30-40 kDa, ~75 kDa.

Storage

Storage:
Store at -20°C. Stable for one year after shipment.
Storage Buffer:
PBS with 0.02% sodium azide and 50% glycerol pH 7.3.
Aliquoting is unnecessary for -20°C storage

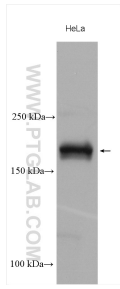
For technical support and original validation data for this product please contact:

T: 1 (888) 4PTGLAB (1-888-478-4522) (toll free in USA), or 1(312) 455-8498 (outside USA)

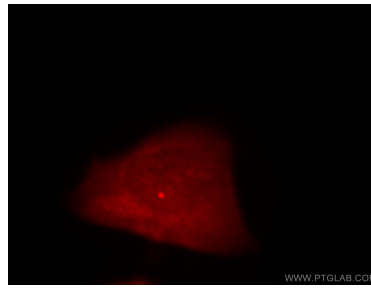
E: proteintech@ptglab.com
W: ptglab.com

This product is exclusively available under Proteintech Group brand and is not available to purchase from any other manufacturer.

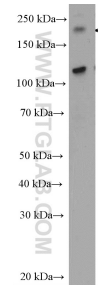
Selected Validation Data



Various lysates were subjected to SDS PAGE followed by western blot with 18899-1-AP (CEP170/CEP170L antibody) at dilution of 1:3000 incubated at room temperature for 1.5 hours.



Immunofluorescent analysis of HeLa cells, using CEP170L antibody 18899-1-AP at 1:25 dilution and Rhodamine-labeled goat anti-rabbit IgG (red).



HeLa cells were subjected to SDS PAGE followed by western blot with 18899-1-AP (CEP170/CEP170L antibody) at dilution of 1:1000 incubated at room temperature for 1.5 hours.