

For Research Use Only

CLEC4D Polyclonal ANTIBODY

Catalog Number: 18930-1-AP



Basic Information

Catalog Number: 18930-1-AP	GenBank Accession Number: BC032313	Recommended Dilutions: WB 1:200-1:1000 IHC 1:20-1:200
Size: 24 µg/150 µl	GeneID (NCBI): 338339	
Source: Rabbit	Full Name: C-type lectin domain family 4, member D	
Isotype: IgG	Calculated MW: 215aa, 25 kDa	
Purification Method: Antigen affinity purification	Observed MW: 25-30 kDa	
Immunogen Catalog Number: AG6852		

Applications

Tested Applications: IHC, WB, ELISA	Positive Controls: WB : Human peripheral blood leukocyte cells; IHC : human tonsillitis tissue;
Species Specificity: human	
Note: suggested antigen retrieval with TE buffer pH 9.0; (*) Alternatively, antigen retrieval may be performed with citrate buffer pH 6.0	

Background Information

Notable Publications

Author	Pubmed ID	Journal	Application
--------	-----------	---------	-------------

Storage

Storage:
Store at -20°C. Stable for one year after shipment.
Storage Buffer:
PBS with 0.1% sodium azide and 50% glycerol pH 7.3.
Aliquoting is unnecessary for -20°C storage

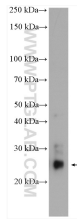
For technical support and original validation data for this product please contact:

T: 1 (888) 4PTGLAB (1-888-478-4522) (toll free in USA), or 1(312) 455-8498 (outside USA)

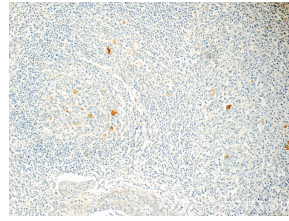
E: proteintech@ptglab.com
W: ptglab.com

This product is exclusively available under Proteintech Group brand and is not available to purchase from any other manufacturer.

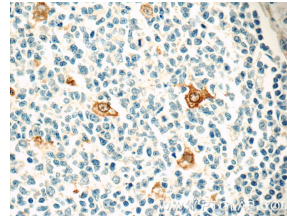
Selected Validation Data



Human peripheral blood leukocyte cells were subjected to SDS PAGE followed by western blot with 18930-1-AP (CLEC4D antibody) at dilution of 1:300 incubated at room temperature for 1.5 hours



Immunohistochemical analysis of paraffin-embedded human tonsillitis tissue slide using 18930-1-AP (CLEC4D Antibody) at dilution of 1:50 (under 10x lens)



Immunohistochemical analysis of paraffin-embedded human tonsillitis tissue slide using 18930-1-AP (CLEC4D Antibody) at dilution of 1:50 (under 40x lens)