

For Research Use Only

# NKCC2 Polyclonal antibody

Catalog Number: 18970-1-AP

Featured Product

32 Publications



## Basic Information

### Catalog Number:

18970-1-AP

### Size:

150ul, Concentration: 350 ug/ml by Nanodrop and 233 ug/ml by Bradford method using BSA as the standard;

### Source:

Rabbit

### Isotype:

IgG

### Immunogen Catalog Number:

AG5325

### GenBank Accession Number:

BC040138

### GeneID (NCBI):

6557

### UNIPROT ID:

Q13621

### Full Name:

solute carrier family 12 (sodium/potassium/chloride transporters), member 1

### Calculated MW:

121 kDa

### Observed MW:

135 kDa

### Purification Method:

Antigen affinity purification

### Recommended Dilutions:

WB: 1:500-1:2000

IHC: 1:2000-1:8000

IF: 1:20-1:200

## Applications

### Tested Applications:

WB, IF, IHC, ELISA

### Cited Applications:

WB, IHC, IF

### Species Specificity:

human, mouse, rat

### Cited Species:

human, mouse, rat

### Positive Controls:

**WB**: HEK-293 cells, 37°C incubated mouse kidney tissue

**IHC**: human kidney tissue, mouse kidney tissue, rat kidney tissue

**IF**: mouse Embryonic kidney tissue,

**Note-IHC: suggested antigen retrieval with TE buffer pH 9.0; (\*) Alternatively, antigen retrieval may be performed with citrate buffer pH 6.0**

## Notable Publications

Author	Pubmed ID	Journal	Application
Eunah Chung	27633993	Development	IF
An-Jing Chen	31515730	Sci China Life Sci	IF
Jessica M Vanslambrouck	31492807	J Am Soc Nephrol	IF

## Storage

### Storage:

Store at -20°C. Stable for one year after shipment.

### Storage Buffer:

PBS with 0.02% sodium azide and 50% glycerol, pH7.3

Aliquoting is unnecessary for -20°C storage

\*\*\* 20ul sizes contain 0.1% BSA

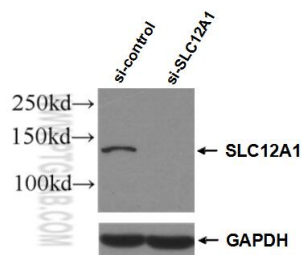
For technical support and original validation data for this product please contact:

T: 1 (888) 4PTGLAB (1-888-478-4522) (toll free in USA), or 1(312) 455-8498 (outside USA)

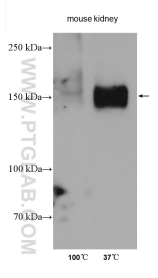
E: [proteintech@ptglab.com](mailto:proteintech@ptglab.com)  
W: [ptglab.com](http://ptglab.com)

This product is exclusively available under Proteintech Group brand and is not available to purchase from any other manufacturer.

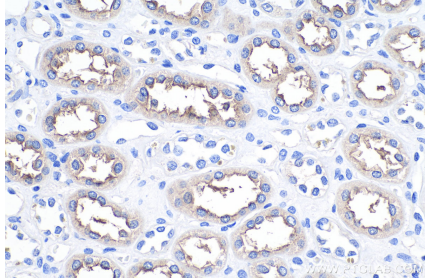
Selected Validation Data



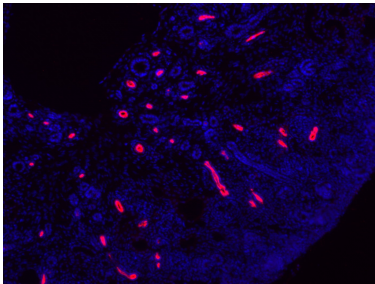
WB result of NKCC2 antibody (18970-1-AP; 1:1000; incubated at room temperature for 1.5 hours) with sh-Control and sh-NKCC2 transfected HEK-293 cells.



Boiled or non-boiled lysates of mouse kidney were subjected to SDS PAGE followed by western blot with 18970-1-AP (NKCC2 antibody) at dilution of 1:3000 incubated at room temperature for 1.5 hours.



Immunohistochemical analysis of paraffin-embedded human kidney tissue slide using 18970-1-AP (NKCC2 antibody) at dilution of 1:4000 (under 40x lens). Heat mediated antigen retrieval with Tris-EDTA buffer (pH 9.0).



IF result of SLC12A1 antibody (18970-1-AP, 1:900) with mouse Embryonic kidneys from E16.5 (fixed with 4% PFA at 4C for 30 min, cryosections 5% goat serum/PBST was used for blocking and antibody incubation). Red: anti-rabbit Alexa555, Blue: Hoechst.