

EGFR-Specific Polyclonal ANTIBODY

Catalog Number: 18986-1-AP

Featured Product

37 Publications

Basic Information

Catalog Number:
18986-1-AP

Size:
75 µg/150 µl

Source:
Rabbit

Isotype:
IgG

Purification Method:
Antigen affinity purification

Immunogen Catalog Number:

GenBank Accession Number:
NM_005228

GeneID (NCBI):
1956

Full Name:
epidermal growth factor receptor (erythroblastic leukemia viral (v-erb-b) oncogene homolog, avian)

Calculated MW:
134 kDa

Observed MW:
145-165 kDa

Recommended Dilutions:

WB 1:2000-1:4000

IP 0.5-4.0 µg for IP and 1:500-1:1000 for WB

Applications

Tested Applications:

FC, IP, WB, ELISA

Cited Applications:

IF, WB

Species Specificity:
human, rat

Cited Species:
human, mouse, rat

Positive Controls:

WB: L02 cells; multi-cells, HeLa/RPE1 cells, NCI-H1299 cells, HeLa cells, HepG2 cells, MCF-7 cells, A431 cells

IP: MCF-7 cells;

Background Information

ERBB1, also named as EGFR, is a receptor for EGF, but also for other members of the EGF family, as TGF- α , amphiregulin, betacellulin, heparin-binding EGF-like growth factor, GP30 and vaccinia virus growth factor. ERBB1 is involved in the control of cell growth and differentiation. Phosphorylates MUC1 in breast cancer cells and increases the interaction of MUC1 with C-SRC and CTNNB1/beta-catenin. Isoform 2/truncated isoform of ERBB1 may act as an antagonist. EGFR is associated with lung cancer. The antibody is specific to isoform1.

Notable Publications

| Author | Pubmed ID | Journal | Application |
|---------------|-----------|-----------------------|-------------|
| Zhirui Zhang | 27658586 | J Exp Clin Cancer Res | WB |
| Qin Zheng | 29072679 | Cell Death Dis | WB |
| Yao-Dong Chen | 29039593 | Mbl Med Rep | WB |

Storage

Storage:

Store at -20°C. Stable for one year after shipment.

Storage Buffer:

PBS with 0.02% sodium azide and 50% glycerol pH 7.3.

Aliquoting is unnecessary for -20°C storage

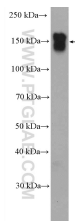
For technical support and original validation data for this product please contact:

T: 1 (888) 4PTGLAB (1-888-478-4522) (toll free in USA), or 1(312) 455-8498 (outside USA)

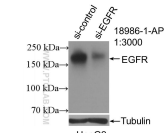
E: proteintech@ptglab.com
W: ptglab.com

This product is exclusively available under Proteintech Group brand and is not available to purchase from any other manufacturer.

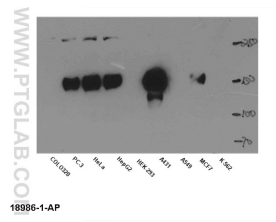
Selected Validation Data



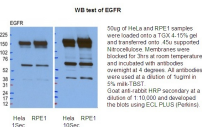
L02 cells were subjected to SDS PAGE followed by western blot with 18986-1-AP (EGFR-Specific antibody) at dilution of 1:2000 incubated at room temperature for 1.5 hours



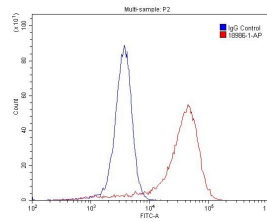
WB result of EGFR-Specific antibody (18986-1-AP; 1:3000; incubated at room temperature for 1.5 hours) with sh-Control and sh-EGFR-Specific transfected HepG2 cells



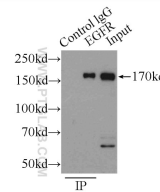
WB result of anti-EGFR (18986-1-AP) in different cell lysates.



WB result of anti-EGFR (18986-1-AP) in HeLa and RPE1 cell by Dr.Kodani, Andrew.



1X10⁶ A431 cells were stained with .2ug EGFR-Specific antibody (18986-1-AP, red) and control antibody (blue). Fixed with 4% PFA blocked with 3% BSA (30 min). Alexa Fluor 488-conjugated AffiniPure Goat Anti-Rabbit IgG(H+L) with dilution 1:1500.



IP Result of anti-EGFR-Specific (IP:18986-1-AP, 3ug; Detection:18986-1-AP 1:500) with MCF-7 cells lysate 2500ug.