

For Research Use Only

# GLI2-Specific Polyclonal ANTIBODY



Catalog Number: 18989-1-AP

Featured Product

12 Publications

## Basic Information

Catalog Number:  
18989-1-AP

Size:  
42 µg/150 µl

Source:  
Rabbit

Isotype:  
IgG

Purification Method:  
Antigen affinity purification

Immunogen Catalog Number:

GenBank Accession Number:  
NM\_001081125

GeneID (NCBI):  
14633

Full Name:  
GLI-Kruppel family member GLI2

Calculated MW:  
168 kDa

Observed MW:  
88 kDa

Recommended Dilutions:

WB 1:500-1:1000

IHC 1:50-1:500

IF 1:10-1:100

## Applications

Tested Applications:  
IF, IHC, WB, ELISA

Cited Applications:  
IF, IHC, WB

Species Specificity:  
human, mouse, rat

Cited Species:  
human, mouse

**Note: suggested antigen retrieval with TE buffer pH 9.0; (\*) Alternatively, antigen retrieval may be performed with citrate buffer pH 6.0**

Positive Controls:

WB : HEK-293 cells; human testis tissue

IHC : human kidney tissue;

IF : HeLa cells; MCF-7 cells

## Background Information

GLI2, also named as THP, belongs to the GLI C2H2-type zinc-finger protein family. GLI2 play a role during embryogenesis. It binds to the DNA sequence 5'-GAACCACCCA-3' which is part of the TRE-2S regulatory element that augments the Tax-dependent enhancer of human T-cell leukemia virus type 1. It is implicated in the transduction of SHH signal. Mutation of GLI2 will cause of holoprosencephaly type 9 (HPES9). Four possible isoforms (hGli2a, b, g, and d) are formed by combinations of two independent alternative splicings, and all the isoforms could bind to a DNA motif, TRE2S. hGli2 a, b, g, and d. These isoforms encode 133-, 131-, 88-, and 86-kDa proteins, respectively.

## Notable Publications

Author	Pubmed ID	Journal	Application
Pai Pang	26427874	Biochem Biophys Res Commun	IHC, IF
Dengdian Wang	28870814	Biochem Biophys Res Commun	WB
Kenichi Matsumoto	28981158	J Cell Biochem	WB, IHC

## Storage

Storage:

Store at -20°C. Stable for one year after shipment.

Storage Buffer:

PBS with 0.02% sodium azide and 50% glycerol pH 7.3.

Aliquoting is unnecessary for -20°C storage

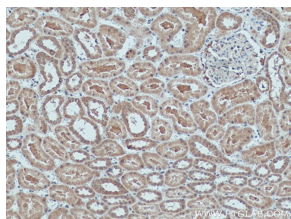
For technical support and original validation data for this product please contact:

T: 1 (888) 4PTGLAB (1-888-478-4522) (toll free in USA), or 1(312) 455-8498 (outside USA)

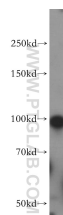
E: [proteintech@ptglab.com](mailto:proteintech@ptglab.com)  
W: [ptglab.com](http://ptglab.com)

This product is exclusively available under Proteintech Group brand and is not available to purchase from any other manufacturer.

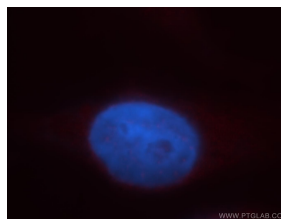
## Selected Validation Data



Immunohistochemistry of paraffin-embedded human kidney tissue slide using 18889-1-AP (GLI2-Specific antibody) at dilution of 1:200 (under 10x lens) heat mediated antigen retrieved with Tris-EDTA buffer(pH9).



HEK-293 cells were subjected to SDS PAGE followed by western blot with 18889-1-AP (GLI2-Specific antibody) at dilution of 1:400 incubated at room temperature for 1.5 hours



Immunofluorescent analysis of HeLa cells, using GLI2 antibody 18889-1-AP at 1:25 dilution and Rhodamine-labeled goat anti-rabbit IgG (red). Blue pseudocolor = DAPI (fluorescent DNA dye).