

For Research Use Only

# GUCY1B3 Polyclonal ANTIBODY



Catalog Number: 19011-1-AP

2 Publications

## Basic Information

Catalog Number:  
19011-1-AP

Size:  
60 µg/150 µl

Source:  
Rabbit

Isotype:  
IgG

Purification Method:  
Antigen affinity purification

Immunogen Catalog Number:  
AG5196

GenBank Accession Number:  
BC047620

GeneID (NCBI):  
2983

Full Name:  
guanylate cyclase 1, soluble, beta 3

Calculated MW:  
71 kDa

Observed MW:  
67-71 kDa

Recommended Dilutions:

WB 1:1000-1:4000

IP 0.5-4.0 µg for IP and 1:500-1:1000 for WB

IF 1:10-1:100

## Applications

Tested Applications:

IF, IP, WB, ELISA

Cited Applications:

IHC, WB

Species Specificity:

human,mouse,rat

Cited Species:

mouse

**Note: suggested antigen retrieval with TE buffer pH 9.0; (\*) Alternatively, antigen retrieval may be performed with citrate buffer pH 6.0**

Positive Controls:

WB : human placenta tissue; mouse lung tissue, rat lung tissue

IP : human placenta tissue;

IF : HeLa cells; MCF-7 cells

## Background Information

### Notable Publications

Author	Pubmed ID	Journal	Application
Catarina Rippe	28465505	Sci Rep	WB,IHC
Baoyi Zhu	28285351	Cell Tissue Res	WB

## Storage

Storage:

Store at -20°C. Stable for one year after shipment.

Storage Buffer:

PBS with 0.02% sodium azide and 50% glycerol pH 7.3.

Aliquoting is unnecessary for -20°C storage

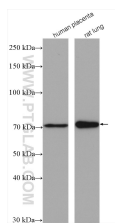
For technical support and original validation data for this product please contact:

T: 1 (888) 4PTGLAB (1-888-478-4522) (toll free in USA), or 1(312) 455-8498 (outside USA)

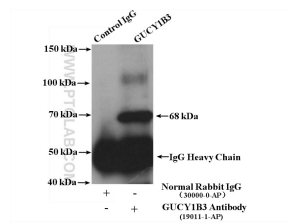
E: [proteintech@ptglab.com](mailto:proteintech@ptglab.com)  
W: [ptglab.com](http://ptglab.com)

This product is exclusively available under Proteintech Group brand and is not available to purchase from any other manufacturer.

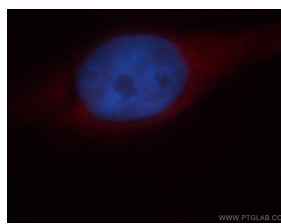
## Selected Validation Data



Various lysates were subjected to SDS PAGE followed by western blot with 19011-1-AP (GUCY1B3 antibody) at dilution of 1:2000 incubated at room temperature for 1.5 hours



IP result of anti-GUCY1B3(IP:19011-1-AP, 4ug; Detection:19011-1-AP 1:500) with human placenta tissue lysate 2600 ug



Immunofluorescent analysis of HeLa cells, using GUCY1B3 antibody 19011-1-AP at 1:25 dilution and Rhodamine-labeled goat anti-rabbit IgG (red). Blue pseudocolor = DAPI (fluorescent DNA dye).