

For Research Use Only

# GOLPH3 Polyclonal antibody

Catalog Number: 19112-1-AP

Featured Product

15 Publications



## Basic Information

### Catalog Number:

19112-1-AP

### Size:

150ul, Concentration: 500 µg/ml by Nanodrop and 333 µg/ml by Bradford method using BSA as the standard;

### Source:

Rabbit

### Isotype:

IgG

### Immunogen Catalog Number:

AG5443

### GenBank Accession Number:

BC033725

### GeneID (NCBI):

64083

### Full Name:

golgi phosphoprotein 3 (coat-protein)

### Calculated MW:

298 aa, 34 kDa

### Observed MW:

34 kDa

### Purification Method:

Antigen affinity purification

### Recommended Dilutions:

WB 1:1000-1:4000

IP 0.5-4.0 ug for IP and 1:500-1:3000

for WB

IHC 1:50-1:500

IF 1:50-1:500

## Applications

### Tested Applications:

IF, IHC, IP, WB, ELISA

### Cited Applications:

CoIP, IF, IHC, WB

### Species Specificity:

human, mouse, rat

### Cited Species:

human, mouse

**Note-IHC: suggested antigen retrieval with TE buffer pH 9.0; (\*) Alternatively, antigen retrieval may be performed with citrate buffer pH 6.0**

### Positive Controls:

WB : HeLa cells, mouse lung tissue, rat testis tissue, mouse testis tissue

IP : mouse testis tissue,

IHC : human colon cancer tissue, human placenta tissue, human colon tissue

IF : HepG2 cells,

## Background Information

GOLPH3 (also called GPP34, GMx33, MIDAS, or yeast Vps74p) is a 34-kDa Golgi-associated protein conserved from yeast to human. GOLPH3 binds to PtdIns(4)P-rich trans-Golgi membranes and MYO18A conveying a tensile force required for efficient tubule and vesicle formation (PMID: 19837035). GOLPH3 has been recently demonstrated as a novel oncoprotein amplified in various types of human malignancies, including melanoma, breast, non-small cell lung cancer, gliomas and connective tissue tumors (PMID:19553991; 23006319; 21499727; 22745132). Enhanced activation of mTOR signalling represents a molecular basis for the oncogenic activity of GOLPH3 (PMID: 19553991).

## Notable Publications

Author	Pubmed ID	Journal	Application
Hua Xing X	23006319	Diagn Pathol	IHC
Qing Zhang	29187903	Theranostics	WB,IHC,IF
Jing Sun	28332316	Cancer Med	WB,IHC

## Storage

### Storage:

Store at -20°C. Stable for one year after shipment.

### Storage Buffer:

PBS with 0.02% sodium azide and 50% glycerol pH 7.3.

Aliquoting is unnecessary for -20°C storage

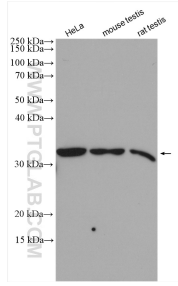
For technical support and original validation data for this product please contact:

T: 1 (888) 4PTGLAB (1-888-478-4522) (toll free in USA), or 1(312) 455-8498 (outside USA)

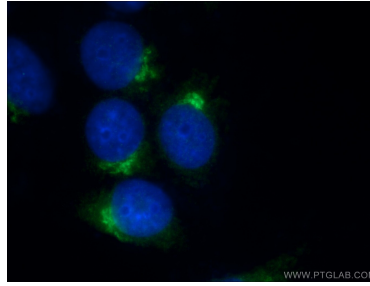
E: proteintech@ptglab.com  
W: ptglab.com

**This product is exclusively available under Proteintech Group brand and is not available to purchase from any other manufacturer.**

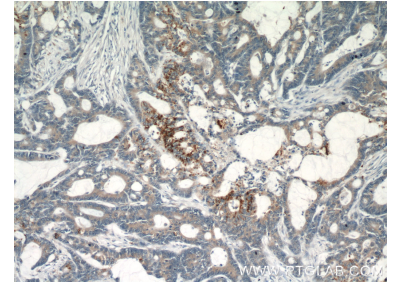
## Selected Validation Data



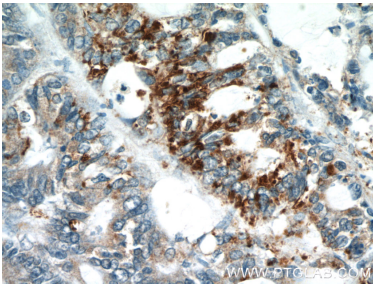
Various lysates were subjected to SDS PAGE followed by western blot with 19112-1-AP (GOLPH3 antibody) at dilution of 1:2000 incubated at room temperature for 1.5 hours.



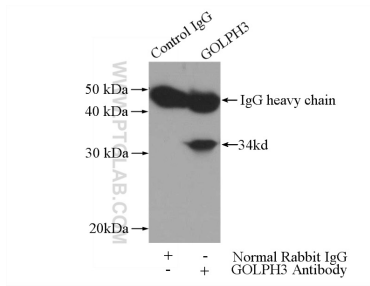
Immunofluorescent analysis of (-20 Ethanol) fixed HepG2 cells using 19112-1-AP (GOLPH3 antibody) at dilution of 1:50 and Alexa Fluor 488-conjugated AffiniPure Goat Anti-Rabbit IgG(H+L).



Immunohistochemical analysis of paraffin-embedded human colon cancer using 19112-1-AP (GOLPH3 antibody) at dilution of 1:50 (under 10x lens).



Immunohistochemical analysis of paraffin-embedded human colon cancer using 19112-1-AP (GOLPH3 antibody) at dilution of 1:50 (under 40x lens).



IP Result of anti-GOLPH3 (IP:19112-1-AP, 3ug; Detection:19112-1-AP 1:1500) with mouse testis tissue lysate 4000ug.