

For Research Use Only

# DCC-Specific Polyclonal antibody

Catalog Number: 19123-1-AP

3 Publications



## Basic Information

### Catalog Number:

19123-1-AP

### Size:

150ul, Concentration: 850 ug/ml by Nanodrop and 427 ug/ml by Bradford method using BSA as the standard;

### Source:

Rabbit

### Isotype:

IgG

### GenBank Accession Number:

NM\_005215

### GeneID (NCBI):

1630

### UNIPROT ID:

P43146

### Full Name:

deleted in colorectal carcinoma

### Calculated MW:

1447 aa, 158 kDa

### Observed MW:

180 kDa

### Purification Method:

Antigen affinity purification

### Recommended Dilutions:

WB: 1:500-1:2000

## Applications

### Tested Applications:

WB, ELISA

### Cited Applications:

WB, IHC, IF

### Species Specificity:

human, mouse, rat

### Cited Species:

mouse, rat

### Positive Controls:

WB: A-673 cells, mouse brain tissue

## Background Information

DCC, also named as IGDCC1, belongs to the immunoglobulin superfamily and DCC family. DCC is a receptor for netrin required for axon guidance. DCC mediates axon attraction of neuronal growth cones in the developing nervous system upon ligand binding. Its association with UNC5 proteins may trigger signaling for axon repulsion. It also acts as a dependence receptor required for apoptosis induction when not associated with netrin ligand. DCC gene is a tumor suppressor gene. This antibody raised against a synthesized polypeptide of human DCC protein recognizes endogenous DCC with an apparent molecular weight of 180 kDa. As the predicted molecular mass of DCC is 158 kDa, the slower mobility is likely attributable to post-translational modification, perhaps by glycosylation at potential N-linked glycosylation sites (PMID: 7926722; 8044801).

## Notable Publications

Author	Pubmed ID	Journal	Application
Mian Xiao	34344989	Sci Rep	IF
Dongdong Chai	32271715	Aging (Albany NY)	WB
Songjie Ji	38628640	Front Pharmacol	WB, IHC

## Storage

### Storage:

Store at -20°C. Stable for one year after shipment.

### Storage Buffer:

PBS with 0.02% sodium azide and 50% glycerol, pH7.3

Aliquoting is unnecessary for -20°C storage

\*\*\* 20ul sizes contain 0.1% BSA

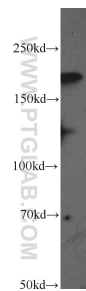
For technical support and original validation data for this product please contact:

T: 1 (888) 4PTGLAB (1-888-478-4522) (toll free in USA), or 1(312) 455-8498 (outside USA)

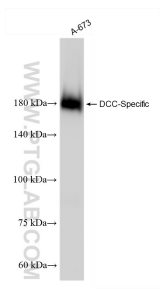
E: [proteintech@ptglab.com](mailto:proteintech@ptglab.com)  
W: [ptglab.com](http://ptglab.com)

This product is exclusively available under Proteintech Group brand and is not available to purchase from any other manufacturer.

# Selected Validation Data



mouse brain tissue were subjected to SDS PAGE followed by western blot with 19123-1-AP (DCC-Specific Antibody) at dilution of 1:600 incubated at room temperature for 1.5 hours.



A-673 cells were subjected to SDS PAGE followed by western blot with 19123-1-AP (DCC-Specific antibody) at dilution of 1:1000 incubated at room temperature for 1.5 hours.