

For Research Use Only

RFC1 Polyclonal antibody

Catalog Number: 19159-1-AP

Featured Product



Basic Information

Catalog Number:

19159-1-AP

Size:

150ul , Concentration: 450 µg/ml by Nanodrop and 333 µg/ml by Bradford method using BSA as the standard;

Source:

Rabbit

Isotype:

IgG

Immunogen Catalog Number:

AG13585

GenBank Accession Number:

BC051751

GeneID (NCBI):

5981

Full Name:

replication factor C (activator 1) 1, 145kDa

Calculated MW:

128 kDa

Observed MW:

128-150 kDa

Purification Method:

Antigen affinity purification

Recommended Dilutions:

WB 1:500-1:3000

Applications

Tested Applications:

WB,ELISA

Species Specificity:

human

Positive Controls:

WB : Jurkat cells, HeLa cells

Background Information

Storage

Storage:

Store at -20°C. Stable for one year after shipment.

Storage Buffer:

PBS with 0.02% sodium azide and 50% glycerol pH 7.3.

Aliquoting is unnecessary for -20°C storage

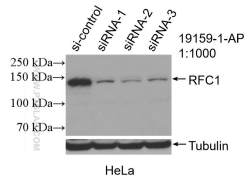
For technical support and original validation data for this product please contact:

T: 1 (888) 4PTGLAB (1-888-478-4522) (toll free in USA), or 1(312) 455-8498 (outside USA)

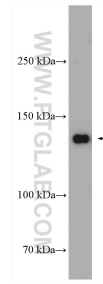
E: proteintech@ptglab.com
W: ptglab.com

This product is exclusively available under Proteintech Group brand and is not available to purchase from any other manufacturer.

Selected Validation Data



WB result of RFC1 antibody (19159-1-AP; 1:1000; incubated at room temperature for 1.5 hours) with sh-Control and sh-RFC1 transfected HeLa cells.



Jurkat cells were subjected to SDS PAGE followed by western blot with 19159-1-AP (RFC1 antibody) at dilution of 1:1500 incubated at room temperature for 1.5 hours.