

For Research Use Only

PSMB5 Polyclonal antibody

Catalog Number: 19178-1-AP

Featured Product

15 Publications



Basic Information

Catalog Number:

19178-1-AP

Size:

150ul, Concentration: 500 ug/ml by Nanodrop and 320 ug/ml by Bradford method using BSA as the standard;

Source:

Rabbit

Isotype:

IgG

Immunogen Catalog Number:

AG5828

GenBank Accession Number:

BC057840

GeneID (NCBI):

5693

UNIPROT ID:

P28074

Full Name:

proteasome (prosome, macropain) subunit, beta type, 5

Calculated MW:

263 aa, 28 kDa

Observed MW:

22 kDa

Purification Method:

Antigen affinity purification

Recommended Dilutions:

WB 1:500-1:2000

IHC 1:50-1:500

IF/ICC 1:50-1:500

Applications

Tested Applications:

WB, IHC, IF/ICC, ELISA

Cited Applications:

WB, IHC, IF, IP

Species Specificity:

human

Cited Species:

human, mouse

Note-IHC: suggested antigen retrieval with TE buffer pH 9.0; (*) Alternatively, antigen retrieval may be performed with citrate buffer pH 6.0

Positive Controls:

WB : HeLa cells, HepG2 cells, Jurkat cells, L02 cells

IHC : human breast cancer tissue,

IF/ICC : HeLa cells,

Background Information

PSMB5 (Proteasome subunit beta type-5) is also named as LMPX, MB1, X and belongs to the peptidase T1B family. The proteasome is a multicatalytic proteinase complex which is characterized by its ability to cleave peptides with Arg, Phe, Tyr, Leu, and Glu adjacent to the leaving group at neutral or slightly basic pH. RNAi-mediated silencing of it has 2 isoforms produced by alternative splicing.

Notable Publications

Author	Pubmed ID	Journal	Application
Alexander Vdovin	36357400	Nat Commun	WB
Hyeran Yu	32489467	J Cancer	WB
Xin Xie	35710020	Biochem Pharmacol	WB

Storage

Storage:

Store at -20°C. Stable for one year after shipment.

Storage Buffer:

PBS with 0.02% sodium azide and 50% glycerol, pH7.3

Aliquoting is unnecessary for -20°C storage

*** 20ul sizes contain 0.1% BSA

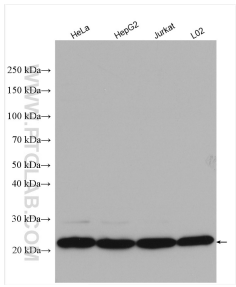
For technical support and original validation data for this product please contact:

T: 1 (888) 4PTGLAB (1-888-478-4522) (toll free in USA), or 1(312) 455-8498 (outside USA)

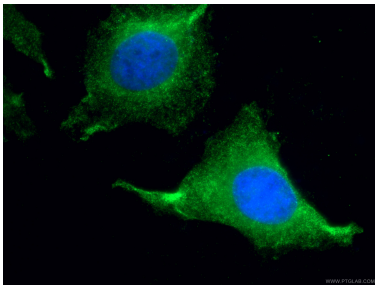
E: proteintech@ptglab.com
W: ptglab.com

This product is exclusively available under Proteintech Group brand and is not available to purchase from any other manufacturer.

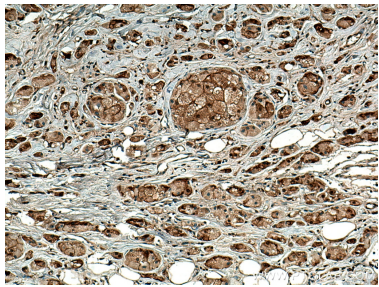
Selected Validation Data



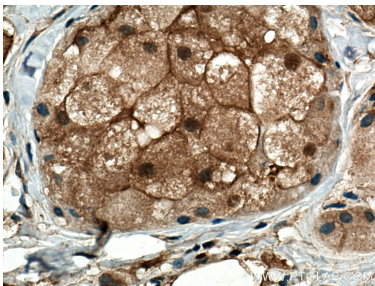
Various lysates were subjected to SDS PAGE followed by western blot with 19178-1-AP (PSMB5 antibody) at dilution of 1:1000 incubated at room temperature for 1.5 hours.



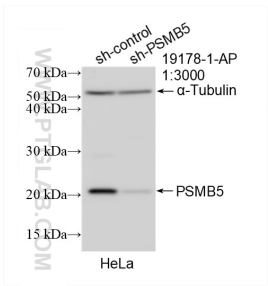
Immunofluorescent analysis of (4% PFA) fixed HeLa cells using 19178-1-AP (PSMB5 antibody), at dilution of 1:200 and CoraLite®488-Conjugated Goat Anti-Rabbit IgG(H+L).



Immunohistochemical analysis of paraffin-embedded human breast cancer tissue slide using 19178-1-AP (PSMB5 antibody) at dilution of 1:200 (under 10x lens). Heat mediated antigen retrieval with Tris-EDTA buffer (pH 9.0).



Immunohistochemical analysis of paraffin-embedded human breast cancer tissue slide using 19178-1-AP (PSMB5 antibody) at dilution of 1:200 (under 40x lens). Heat mediated antigen retrieval with Tris-EDTA buffer (pH 9.0).



WB result of PSMB5 antibody (19178-1-AP; 1:3000; incubated at room temperature for 1.5 hours) with sh-Control and sh-PSMB5 transfected HeLa cells.