

# ATN1 Polyclonal ANTIBODY

Catalog Number: 19243-1-AP

## Basic Information

Catalog Number:  
19243-1-AP

Size:  
34 µg/150 µl

Source:  
Rabbit

Isotype:  
IgG

Purification Method:  
Antigen affinity purification

Immunogen Catalog Number:  
AG5835

GenBank Accession Number:  
BC051795

GeneID (NCBI):  
1822

Full Name:  
atrophin 1

Calculated MW:  
125 kDa

Observed MW:  
105-110 kDa

Recommended Dilutions:

WB 1:200-1:1000

IHC 1:20-1:200

## Applications

Tested Applications:

IHC, WB, ELISA

Species Specificity:

human, mouse

**Note: suggested antigen retrieval with TE buffer pH 9.0; (\*) Alternatively, antigen retrieval may be performed with citrate buffer pH 6.0**

Positive Controls:

WB : mouse testis tissue;

IHC : human ovary tissue; human testis tissue

## Background Information

ATN1 also known as Atrophin-1 is a protein that in humans is encoded by the ATN1 gene. Dentatorubral pallidoluysian atrophy is a rare neurodegenerative disorder characterized by cerebellar ataxia, myoclonic epilepsy, choreoathetosis, and dementia. The disorder is related to the expansion of a trinucleotide repeat within this gene. The encoded protein includes a serine repeat and a region of alternating acidic and basic amino acids, as well as the variable glutamine repeat.

## Notable Publications

Author	Pubmed ID	Journal	Application
--------	-----------	---------	-------------

## Storage

Storage:

Store at -20°C. Stable for one year after shipment.

Storage Buffer:

PBS with 0.1% sodium azide and 50% glycerol pH 7.3.

Aliquoting is unnecessary for -20°C storage

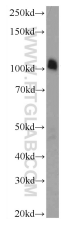
For technical support and original validation data for this product please contact:

T: 1 (888) 4PTGLAB (1-888-478-4522) (toll free in USA), or 1(312) 455-8498 (outside USA)

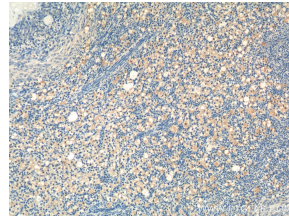
E: [proteintech@ptglab.com](mailto:proteintech@ptglab.com)  
W: [ptglab.com](http://ptglab.com)

This product is exclusively available under Proteintech Group brand and is not available to purchase from any other manufacturer.

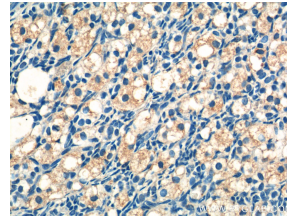
## Selected Validation Data



mouse testis tissue were subjected to SDS PAGE followed by western blot with 19243-1-AP( ATN1 Antibody) at dilution of 1:300 incubated at room temperature for 1.5 hours



Immunohistochemistry of paraffin-embedded human ovary tissue slide using 19243-1-AP( ATN1 Antibody) at dilution of 1:50 (under 10x lens)



Immunohistochemistry of paraffin-embedded human ovary tissue slide using 19243-1-AP( ATN1 Antibody) at dilution of 1:50 (under 40x lens)