

For Research Use Only

# CLCA2 Polyclonal antibody

Catalog Number: 19273-1-AP



## Basic Information

<b>Catalog Number:</b> 19273-1-AP	<b>GenBank Accession Number:</b> BC041096	<b>Purification Method:</b> Antigen affinity purification
<b>Size:</b> 150UL, Concentration: 400 µg/ml by Nanodrop and 207 µg/ml by Bradford method using BSA as the standard;	<b>GeneID (NCBI):</b> 9635	<b>Recommended Dilutions:</b> WB 1:500-1:1000 IHC 1:20-1:200
<b>Source:</b> Rabbit	<b>Full Name:</b> chloride channel accessory 2	
<b>Isotype:</b> IgG	<b>Calculated MW:</b> 104 kDa	
<b>Immunogen Catalog Number:</b> AG5914	<b>Observed MW:</b> 141 kDa, 35-40 kDa	

## Applications

<b>Tested Applications:</b> IHC, WB, ELISA	<b>Positive Controls:</b> WB : mouse lung tissue, COLO 320 cells IHC : human oesophagus tissue,
<b>Species Specificity:</b> human, mouse	
<b>Note-IHC: suggested antigen retrieval with TE buffer pH 9.0; (*) Alternatively, antigen retrieval may be performed with citrate buffer pH 6.0</b>	

## Background Information

### Storage

**Storage:**  
Store at -20°C. Stable for one year after shipment.  
**Storage Buffer:**  
PBS with 0.02% sodium azide and 50% glycerol pH 7.3.  
Aliquoting is unnecessary for -20°C storage

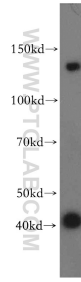
For technical support and original validation data for this product please contact:

T: 1 (888) 4PTGLAB (1-888-478-4522) (toll free in USA), or 1(312) 455-8498 (outside USA)

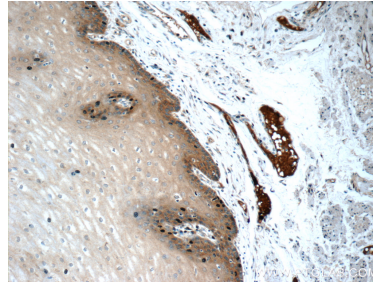
E: [proteintech@ptglab.com](mailto:proteintech@ptglab.com)  
W: [ptglab.com](http://ptglab.com)

This product is exclusively available under Proteintech Group brand and is not available to purchase from any other manufacturer.

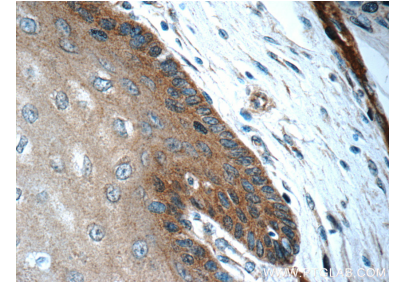
## Selected Validation Data



mouse lung tissue were subjected to SDS PAGE followed by western blot with 19273-1-AP (CLCA2 antibody) at dilution of 1:300 incubated at room temperature for 1.5 hours.



Immunohistochemical analysis of paraffin-embedded human oesophagus tissue slide using 19273-1-AP (CLCA2 Antibody) at dilution of 1:50 (under 10x lens).



Immunohistochemical analysis of paraffin-embedded human oesophagus tissue slide using 19273-1-AP (CLCA2 Antibody) at dilution of 1:50 (under 40x lens).