

For Research Use Only

IFT122 Polyclonal antibody

Catalog Number: 19304-1-AP

3 Publications



Basic Information

Catalog Number:

19304-1-AP

Size:

150ul, Concentration: 260 ug/ml by Nanodrop and 220 ug/ml by Bradford method using BSA as the standard;

Source:

Rabbit

Isotype:

IgG

Immunogen Catalog Number:

AG6860

GenBank Accession Number:

BC004238

GeneID (NCBI):

55764

UNIPROT ID:

Q9HBG6

Full Name:

intraflagellar transport 122 homolog (Chlamydomonas)

Calculated MW:

142 kDa

Observed MW:

140 kDa

Purification Method:

Antigen affinity purification

Recommended Dilutions:

WB 1:200-1:1000

IHC 1:20-1:200

IF/ICC 1:200-1:800

Applications

Tested Applications:

WB, IHC, IF/ICC, ELISA

Cited Applications:

WB, IF

Species Specificity:

human, mouse, canine

Cited Species:

human, mouse

Note-IHC: suggested antigen retrieval with TE buffer pH 9.0; (*) Alternatively, antigen retrieval may be performed with citrate buffer pH 6.0

Positive Controls:

WB: mouse testis tissue,

IHC: human testis tissue, human brain tissue, human stomach tissue

IF/ICC: MDCK cells, hTERT-RPE1 cells

Notable Publications

| Author | Pubmed ID | Journal | Application |
|-----------------|-----------|---------------|-------------|
| Tooba Quidwai | 34734804 | Elife | WB,IF |
| Siew Cheng Phua | 28086093 | Cell | WB |
| Mariko Takahara | 29220510 | Hum Mol Genet | WB |

Storage

Storage:

Store at -20°C. Stable for one year after shipment.

Storage Buffer:

PBS with 0.02% sodium azide and 50% glycerol pH 7.3.

Aliquoting is unnecessary for -20°C storage

*** 20ul sizes contain 0.1% BSA

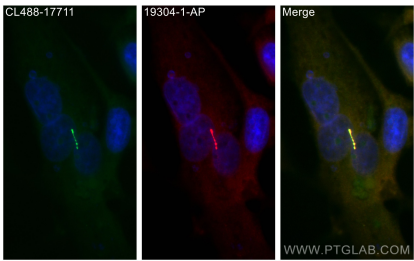
For technical support and original validation data for this product please contact:

T: 1 (888) 4PTGLAB (1-888-478-4522) (toll free in USA), or 1(312) 455-8498 (outside USA)

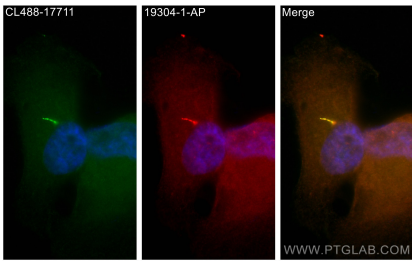
E: proteintech@ptglab.com
W: ptglab.com

This product is exclusively available under Proteintech Group brand and is not available to purchase from any other manufacturer.

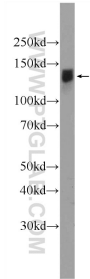
Selected Validation Data



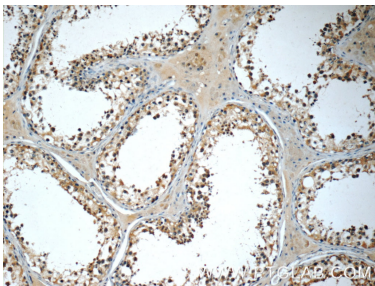
Immunofluorescent analysis of (-20°C Methanol) fixed MDCK cells using IFT122 antibody (19304-1-AP) at dilution of 1:400 and CoraLite®594-Conjugated AffiniPure Goat Anti-Rabbit IgG(H+L), CoraLite® Plus 488 ARL13B antibody (CL488-17711, green).



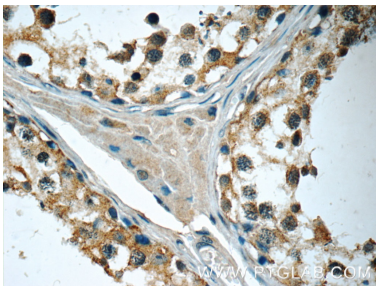
Immunofluorescent analysis of (-20°C Methanol) fixed hTERT-RPE1 cells using IFT122 antibody (19304-1-AP) at dilution of 1:400 and CoraLite®594-Conjugated AffiniPure Goat Anti-Rabbit IgG(H+L), CoraLite® Plus 488 ARL13B antibody (CL488-17711, green).



mouse testis tissue were subjected to SDS PAGE followed by western blot with 19304-1-AP (IFT122 Antibody) at dilution of 1:300 incubated at room temperature for 1.5 hours.



Immunohistochemical analysis of paraffin-embedded human testis tissue slide using 19304-1-AP (IFT122 Antibody) at dilution of 1:50 (under 10x lens).



Immunohistochemical analysis of paraffin-embedded human testis tissue slide using 19304-1-AP (IFT122 Antibody) at dilution of 1:50 (under 40x lens).