

For Research Use Only

# TRPC1 Polyclonal antibody

Catalog Number: 19482-1-AP **6 Publications**



## Basic Information

<b>Catalog Number:</b> 19482-1-AP	<b>GenBank Accession Number:</b> NM_003304	<b>Purification Method:</b> Antigen affinity purification
<b>Size:</b> 150UL, Concentration: 600 µg/ml by Nanodrop and 293 µg/ml by Bradford method using BSA as the standard;	<b>GeneID (NCBI):</b> 7220	<b>Recommended Dilutions:</b> WB 1:500-1:2000 IF 1:10-1:100
<b>Source:</b> Rabbit	<b>Full Name:</b> transient receptor potential cation channel, subfamily C, member 1	
<b>Isotype:</b> IgG	<b>Calculated MW:</b> 91 kDa	
	<b>Observed MW:</b> 90 kDa, 130 kDa	

## Applications

<b>Tested Applications:</b> FC, IF, WB, ELISA	<b>Positive Controls:</b> WB : PC-3 cells, human brain tissue, human testis tissue, mouse liver tissue, SH-SY5Y cells IF : PC-12 cells,
<b>Cited Applications:</b> WB	
<b>Species Specificity:</b> human, mouse, rat	
<b>Cited Species:</b> human, mouse, rat	

## Background Information

TRPC1, also named as TRP1, belongs to the transient receptor family and TRPC subfamily. TRPC1 is thought to form a receptor-activated non-selective calcium permeant cation channel. It has been reported that the mGluR1 evoked slow EPSC is mediated by the TRPC1 cation channel. It is operated by a phosphatidylinositol second messenger system activated by receptor tyrosine kinases or G-protein coupled receptors.

## Notable Publications

Author	Pubmed ID	Journal	Application
Schmid Evi E	23171960	Cell Physiol Biochem	WB
Tzu-Yu Huang	29912163	Int J Mol Sci	WB
Shuping Jia	28698564	Sci Rep	WB

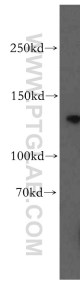
## Storage

**Storage:**  
Store at -20°C. Stable for one year after shipment.  
**Storage Buffer:**  
PBS with 0.02% sodium azide and 50% glycerol pH 7.3.  
Aliquoting is unnecessary for -20°C storage

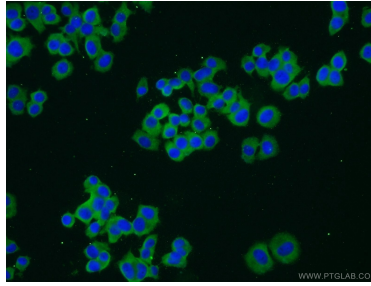
For technical support and original validation data for this product please contact:  
T: 1 (888) 4PTGLAB (1-888-478-4522) (toll free in USA), or 1(312) 455-8498 (outside USA)  
E: proteintech@ptglab.com  
W: ptglab.com

**This product is exclusively available under Proteintech Group brand and is not available to purchase from any other manufacturer.**

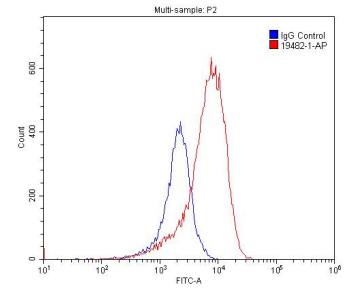
## Selected Validation Data



PC-3 cells were subjected to SDS PAGE followed by western blot with 19482-1-AP (TRPC1 antibody) at dilution of 1:500 incubated at room temperature for 1.5 hours.



Immunofluorescent analysis of PC-12 cells using 19482-1-AP (TRPC1 antibody) at dilution of 1:25 and Alexa Fluor 488-conjugated AffiniPure Goat Anti-Rabbit IgG(H+L).



$1 \times 10^6$  PC-3 cells were stained with 0.2ug TRPC1 antibody (19482-1-AP, red) and control antibody (blue). Fixed with 4% PFA blocked with 3% BSA (30 min). Alexa Fluor 488-conjugated AffiniPure Goat Anti-Rabbit IgG(H+L) with dilution 1:1500.