

For Research Use Only

# SPIN1-Specific Polyclonal ANTIBODY



Catalog Number: 19531-1-AP

Featured Product

3 Publications

## Basic Information

**Catalog Number:**

19531-1-AP

**Size:**

150UL, Concentration: 207 µg/ml by Bradford method using BSA as the standard;

**Source:**

Rabbit

**Isotype:**

IgG

**GenBank Accession Number:**

NM\_006717

**GeneID (NCBI):**

10927

**Full Name:**

spindlin 1

**Calculated MW:**

30 kDa

**Observed MW:**

30 kDa

**Purification Method:**

Antigen affinity purification

**Recommended Dilutions:**

WB 1:500-1:2000

IHC 1:20-1:200

IF 1:10-1:100

## Applications

**Tested Applications:**

IF, IHC, WB, ELISA

**Cited Applications:**

IHC, WB

**Species Specificity:**

human

**Cited Species:**

human

**Note-IHC: suggested antigen retrieval with TE buffer pH 9.0; (\*) Alternatively, antigen retrieval may be performed with citrate buffer pH 6.0**

**Positive Controls:**

WB : SKOV-3 cells, A2780 cells, HEK-293 cells

IHC : human ovary tumor tissue,

IF : HeLa cells,

## Background Information

Spindlin 1 (SPIN1) is a stage specific embryonic protein. It was reported as an abundant maternal transcript present in the unfertilized egg and 2-cell, but not 8-cell, stage embryo. Spindlin 1 was phosphorylated in a cell cycle-dependent manner, undergoing posttranslational modification during the first meiotic cycle. This antibody is specific to spindlin 1 (SPIN1), not to other spindlins, such as SPIN2 and SPIN3.

## Notable Publications

Author	Pubmed ID	Journal	Application
Xu Chen	29743122	J Exp Clin Cancer Res	IHC
Sulpizio Marilisa M	21826706	J Cell Biochem	WB
Rosa Drago-Ferrante	28423652	Oncotarget	WB

## Storage

**Storage:**

Store at -20°C. Stable for one year after shipment.

**Storage Buffer:**

PBS with 0.02% sodium azide and 50% glycerol pH 7.3.

Aliquoting is unnecessary for -20°C storage

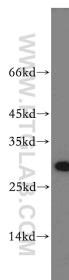
For technical support and original validation data for this product please contact:

T: 1 (888) 4PTGLAB (1-888-478-4522) (toll free in USA), or 1(312) 455-8498 (outside USA)

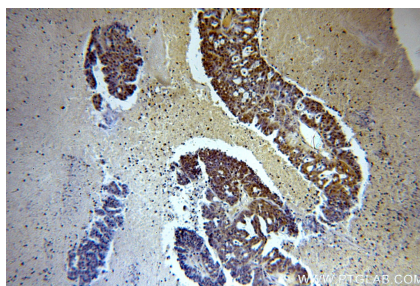
E: [proteintech@ptglab.com](mailto:proteintech@ptglab.com)  
W: [ptglab.com](http://ptglab.com)

**This product is exclusively available under Proteintech Group brand and is not available to purchase from any other manufacturer.**

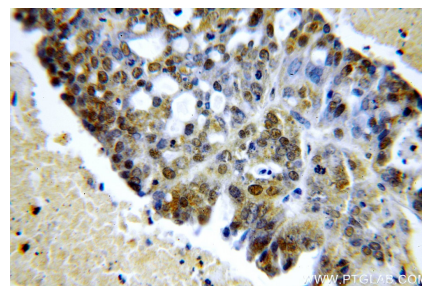
## Selected Validation Data



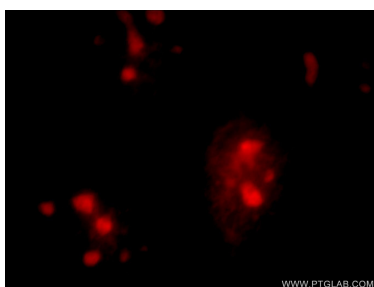
SKOV-3 cells were subjected to SDS PAGE followed by western blot with 19531-1-AP (SPIN1-Specific antibody) at dilution of 1:500 incubated at room temperature for 1.5 hours.



Immunohistochemical analysis of paraffin-embedded human ovary tumor using 19531-1-AP (SPIN1-Specific antibody) at dilution of 1:100 (under 10x lens).



Immunohistochemical analysis of paraffin-embedded human ovary tumor using 19531-1-AP (SPIN1-Specific antibody) at dilution of 1:100 (under 40x lens).



Immunofluorescent analysis of HeLa cells, using SPIN1 antibody 19531-1-AP at 1:25 dilution and Rhodamine-labeled goat anti-rabbit IgG (red).