

GCK Polyclonal ANTIBODY

Catalog Number: 19666-1-AP

8 Publications

Basic Information

Catalog Number:
19666-1-AP

Size:
26 µg/150 µl

Source:
Rabbit

Isotype:
IgG

Purification Method:
Antigen affinity purification

Immunogen Catalog Number:
AG3116

GenBank Accession Number:
BC001890

GeneID (NCBI):
2645

Full Name:
glucokinase (hexokinase 4)

Calculated MW:
52 kDa

Observed MW:
50-52 kDa

Recommended Dilutions:

WB 1:500-1:1000

IP 0.5-4.0 µg for IP and 1:500-1:1000 for WB

IHC 1:100-1:400

Applications

Tested Applications:

IHC, IP, WB, ELISA

Cited Applications:

IHC, WB

Species Specificity:
mouse, rat

Cited Species:
mouse, rat

**Note-IHC: suggested antigen retrieval with
TE buffer pH 9.0; (*) Alternatively, antigen
retrieval may be performed with citrate
buffer pH 6.0**

Positive Controls:

WB : rat liver tissue; mouse pancreas tissue,
mouse liver tissue

IP : mouse liver tissue;

IHC : human liver tissue;

Background Information

Glucokinase (GCK) is a structurally and functionally unique member of hexokinase family. It is expressed only in mammalian liver and pancreatic islet beta cells. Because of its unique functional characteristics, the enzyme plays an important regulatory role in glucose metabolism. The rate of glucose metabolism in liver and pancreas is a function of the activity of the enzyme (PMD:1740341). Moreover, GCK has been found to have relationship with diabetes. Defects in GCK are the cause of maturity-onset diabetes of the young type 2 (MODY2) and familial hyperinsulinemic hypoglycemia type 3 (HIHF3). It has 3 isoforms produced by alternative splicing with the same molecular mass of 52 kDa.

Notable Publications

Author	Pubmed ID	Journal	Application
Cheng Liu	25397718	J Agric Food Chem	WB
Kelei Dong	27207834	Biochem Biophys Res Commun	WB
Fei Wang	31228551	Toxicology	WB

Storage

Storage:

Store at -20°C. Stable for one year after shipment.

Storage Buffer:

PBS with 0.02% sodium azide and 50% glycerol pH 7.3.

Aliquoting is unnecessary for -20°C storage

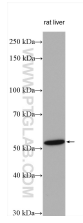
For technical support and original validation data for this product please contact:

T: 1 (888) 4PTGLAB (1-888-478-4522) (toll free in USA), or 1(312) 455-8498 (outside USA)

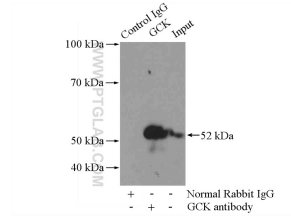
E: proteintech@ptglab.com
W: ptglab.com

This product is exclusively available under Proteintech Group brand and is not available to purchase from any other manufacturer.

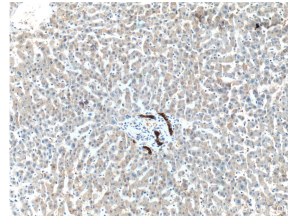
Selected Validation Data



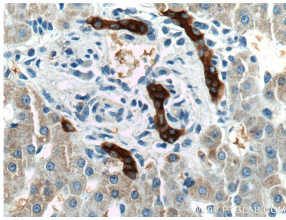
rat liver tissue were subjected to SDS PAGE followed by western blot with 19666-1-AP (GCK antibody) at dilution of 1:600 incubated at room temperature for 1.5 hours



IP Result of anti-GCK (IP:19666-1-AP, 4ug; Detection:19666-1-AP 1:800) with mouse liver tissue lysate 4000ug.



Immunohistochemical analysis of paraffin-embedded human liver tissue slide using 19666-1-AP (GCK Antibody) at dilution of 1:200 (under 10x lens).



Immunohistochemical analysis of paraffin-embedded human liver tissue slide using 19666-1-AP (GCK Antibody) at dilution of 1:200 (under 40x lens).