

For Research Use Only

FOXL2-Specific Polyclonal ANTIBODY



Catalog Number: 19672-1-AP

Featured Product

2 Publications

Basic Information

Catalog Number:

19672-1-AP

Size:

150UL, Concentration: 233 µg/ml by Bradford method using BSA as the standard;

Source:

Rabbit

Isotype:

IgG

GenBank Accession Number:

NM_023067

GeneID (NCBI):

668

Full Name:

forkhead box L2

Calculated MW:

39 kDa

Observed MW:

49 kDa

Purification Method:

Antigen affinity purification

Recommended Dilutions:

WB 1:500-1:2000

Applications

Tested Applications:

WB, ELISA

Cited Applications:

IF, IHC, WB

Species Specificity:

human, mouse, rat

Cited Species:

hen, human

Positive Controls:

WB: mouse ovary tissue,

Background Information

FOXL2 is probable a transcriptional regulator. It is required to maintain the female phenotype throughout adulthood, and may provide clues to female infertility. Defects in FOXL2 are a cause of blepharophimosis, ptosis, and epicanthus inversus syndrome (BPES) Defects in FOXL2 are a cause of premature ovarian failure type 3 (POF3). This antibody is specific to the C-term of FOXL2.

Notable Publications

Author	Pubmed ID	Journal	Application
Jiaqiang Dong	28119367	Clin Cancer Res	WB,IHC
Xin Lin	29706614	Aging (Albany NY)	IF

Storage

Storage:

Store at -20°C. Stable for one year after shipment.

Storage Buffer:

PBS with 0.1% sodium azide and 50% glycerol pH 7.3.

Aliquoting is unnecessary for -20°C storage

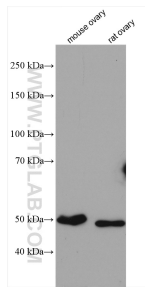
For technical support and original validation data for this product please contact:

T: 1 (888) 4PTGLAB (1-888-478-4522) (toll free in USA), or 1(312) 455-8498 (outside USA)

E: proteintech@ptglab.com
W: ptglab.com

This product is exclusively available under Proteintech Group brand and is not available to purchase from any other manufacturer.

Selected Validation Data



Various lysates were subjected to SDS PAGE followed by western blot with 19672-1-AP (FOXL2-Specific antibody) at dilution of 1:1000 incubated at room temperature for 1.5 hours.