

For Research Use Only

# HSPG2-Specific Polyclonal antibody



Catalog Number: 19675-1-AP

1 Publications

## Basic Information

<b>Catalog Number:</b> 19675-1-AP	<b>GenBank Accession Number:</b> NM_005529	<b>Purification Method:</b> Antigen affinity purification
<b>Size:</b> 150UL, Concentration: 300 µg/ml by Nanodrop and 267 µg/ml by Bradford method using BSA as the standard;	<b>GeneID (NCBI):</b> 3339	<b>Recommended Dilutions:</b> WB 1:200-1:1000
<b>Source:</b> Rabbit	<b>Full Name:</b> heparan sulfate proteoglycan 2	
<b>Isotype:</b> IgG	<b>Calculated MW:</b> 469 kDa	
	<b>Observed MW:</b> 469 kDa	

## Applications

<b>Tested Applications:</b> WB, ELISA	<b>Positive Controls:</b> WB : COLO 320 cells,
<b>Cited Applications:</b> WB	
<b>Species Specificity:</b> human, mouse, rat	
<b>Cited Species:</b> human	

## Background Information

HSPG2, also named as PLC and HSPG, is an integral component of basement membranes. It is responsible for the fixed negative electrostatic charge and is involved in the charge-selective ultrafiltration properties. It serves as an attachment substrate for cells. Defects in HSPG2 are the cause of Schwartz-Jampel syndrome (SJS1). Defects in HSPG2 are the cause of dyssegmental dysplasia Silverman-Handmaker type (DDSH). The antibody is specific to HSPG2.

## Notable Publications

Author	Pubmed ID	Journal	Application
Aixue Huang	26157350	Int J Biol Sci	WB

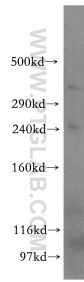
## Storage

**Storage:**  
Store at -20°C. Stable for one year after shipment.  
**Storage Buffer:**  
PBS with 0.02% sodium azide and 50% glycerol pH 7.3.  
Aliquoting is unnecessary for -20°C storage

For technical support and original validation data for this product please contact:  
T: 1 (888) 4PTGLAB (1-888-478-4522) (toll free in USA), or 1(312) 455-8498 (outside USA)  
E: proteintech@ptglab.com  
W: ptglab.com

This product is exclusively available under Proteintech Group brand and is not available to purchase from any other manufacturer.

## Selected Validation Data



COLO 320 cells were subjected to SDS PAGE followed by western blot with 19675-1-AP (HSPG2-Specific antibody) at dilution of 1:300 incubated at room temperature for 1.5 hours.