

For Research Use Only

LIMK1 Polyclonal antibody

Catalog Number: 19699-1-AP **3 Publications**



Basic Information

Catalog Number: 19699-1-AP	GenBank Accession Number: NM_002314	Purification Method: Antigen affinity purification
Size: 150ul , Concentration: 350 µg/ml by Nanodrop and 167 µg/ml by Bradford method using BSA as the standard;	GeneID (NCBI): 3984	Recommended Dilutions: IHC 1:20-1:200 IF 1:50-1:500
Source: Rabbit	Full Name: LIM domain kinase 1	
Isotype: IgG	Calculated MW: 73 kDa	

Applications

Tested Applications: IF, IHC, ELISA	Positive Controls: IHC : human heart tissue, human brain tissue IF : HeLa cells,
Cited Applications: IHC	
Species Specificity: human, mouse	
Cited Species: human	

Note-IHC: suggested antigen retrieval with TE buffer pH 9.0; (*) Alternatively, antigen retrieval may be performed with citrate buffer pH 6.0

Background Information

LIMK1, also named LIMK, belongs to the protein kinase superfamily and TKL Ser/Thr protein kinase family. LIMK1 is a protein kinase which regulates actin filament dynamics. Phosphorylates and inactivates the actin binding/depolymerizing factor cofilin, thereby stabilizing the actin cytoskeleton. Isoform 3 has a dominant negative effect on actin cytoskeletal changes. LIMK1 may be involved in brain development. The antibody has no cross-reaction with LIMK2.

Notable Publications

Author	Pubmed ID	Journal	Application
Xiufang Yang	33760158	Oncol Rep	IHC
Yue Zhang	29970879	Cell Death Dis	WB
Nengquan Sheng	28440035	Cancer Med	WB

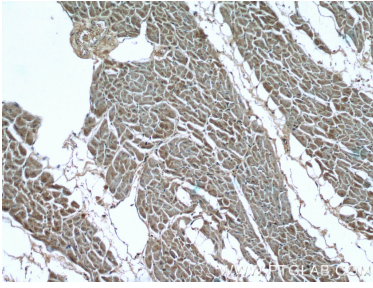
Storage

Storage:
Store at -20°C. Stable for one year after shipment.
Storage Buffer:
PBS with 0.02% sodium azide and 50% glycerol pH 7.3.
Aliquoting is unnecessary for -20°C storage

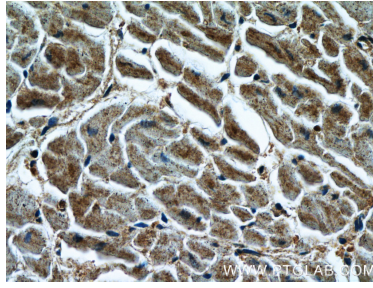
For technical support and original validation data for this product please contact:
T: 1 (888) 4PTGLAB (1-888-478-4522) (toll free in USA), or 1(312) 455-8498 (outside USA)
E: proteintech@ptglab.com
W: ptglab.com

This product is exclusively available under Proteintech Group brand and is not available to purchase from any other manufacturer.

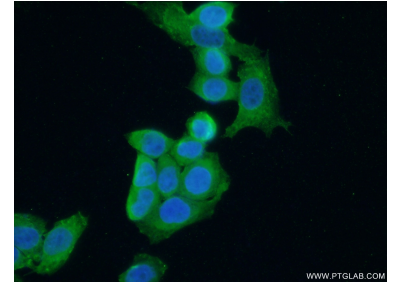
Selected Validation Data



Immunohistochemical analysis of paraffin-embedded human heart tissue slide using 19699-1-AP (LIMK1 Antibody) at dilution of 1:200 (under 10x lens).



Immunohistochemical analysis of paraffin-embedded human heart tissue slide using 19699-1-AP (LIMK1 Antibody) at dilution of 1:200 (under 40x lens).



Immunofluorescent analysis of (10% Formaldehyde) fixed HeLa cells using 19699-1-AP (LIMK1 antibody) at dilution of 1:50 and Alexa Fluor 488-conjugated AffiniPure Goat Anti-Rabbit IgG(H+L).