

For Research Use Only

CYP4F3

Polyclonal ANTIBODY



Catalog Number: 19701-1-AP

Basic Information

Catalog Number: 19701-1-AP	GenBank Accession Number: NM_000896	Purification Method: Antigen affinity purification
Size: 150UL, Concentration: 460 µg/ml by Bradford method using BSA as the standard;	GeneID (NCBI): 4051	Recommended Dilutions: WB 1:200-1:1000
Source: Rabbit	Full Name: cytochrome P450, family 4, subfamily F, polypeptide 3	
Isotype: IgG	Calculated MW: 60 kDa	
	Observed MW: 60 kDa	

Applications

Tested Applications: WB, ELISA	Positive Controls: WB: HL-60 cells,
Species Specificity: human	

Background Information

CYP4F3, also named as LTB4H and CYP1VF3, belongs to the cytochrome P450 family. Cytochromes P450 are a group of heme-thiolate monooxygenases. CYP4F3 requires molecular oxygen and NADPH for the omega-hydroxylation of LTB4, a potent chemoattractant for polymorphonuclear leukocytes.

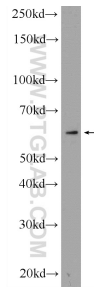
Storage

Storage:
Store at -20°C. Stable for one year after shipment.
Storage Buffer:
PBS with 0.1% sodium azide and 50% glycerol pH 7.3.
Aliquoting is unnecessary for -20°C storage

For technical support and original validation data for this product please contact:
T: 1 (888) 4PTGLAB (1-888-478-4522) (toll free in USA), or 1(312) 455-8498 (outside USA) E: proteintech@ptglab.com
W: ptglab.com

This product is exclusively available under Proteintech Group brand and is not available to purchase from any other manufacturer.

Selected Validation Data



HL-60 cells were subjected to SDS PAGE followed by western blot with 19701-1-AP (CYP4F3 Antibody) at dilution of 1:300 incubated at 4 degree celsius over night.