

For Research Use Only

# RYR2 Polyclonal ANTIBODY



Catalog Number: 19765-1-AP **6 Publications**

## Basic Information

<b>Catalog Number:</b> 19765-1-AP	<b>GenBank Accession Number:</b> NM_001035	<b>Purification Method:</b> Antigen affinity purification
<b>Size:</b> 150UL, Concentration: 333 µg/ml by Bradford method using BSA as the standard;	<b>GeneID (NCBI):</b> 6262	<b>Recommended Dilutions:</b> WB 1:500-1:2000 IHC 1:100-1:400 IF 1:50-1:500
<b>Source:</b> Rabbit	<b>Full Name:</b> ryanodine receptor 2 (cardiac)	
<b>Isotype:</b> IgG	<b>Calculated MW:</b> 565 kDa	
	<b>Observed MW:</b> 250 kDa	

## Applications

### Tested Applications:

IF, IHC, WB, ELISA

### Cited Applications:

IHC, WB

### Species Specificity:

human, mouse

### Cited Species:

human, mouse, rat

**Note-IHC: suggested antigen retrieval with TE buffer pH 9.0; (\*) Alternatively, antigen retrieval may be performed with citrate buffer pH 6.0**

### Positive Controls:

**WB:** HeLa cells, human brain tissue, human placenta tissue, mouse brain tissue

**IHC:** human heart tissue, human brain tissue, human placenta tissue, human skeletal muscle tissue

**IF:** mouse heart tissue, HEK-293 cells

## Background Information

RYR2 belongs to the ryanodine receptor family. RYR2 provides communication between transverse-tubules and sarcoplasmic reticulum. Contraction of cardiac muscle is triggered by release of calcium ions from SR following depolarization of T-tubules. Defects in RYR2 are the cause of familial arrhythmogenic right ventricular dysplasia type 2 (ARVD2) which known as arrhythmogenic right ventricular cardiomyopathy 2 (ARVC2). Defects in RYR2 are the cause of catecholaminergic polymorphic ventricular tachycardia type 1 (CPVT1) which known as stress-induced polymorphic ventricular tachycardia (VTSIP). This antibody detects a band at ~250 kDa which has been reported (PMID: 22962011).

## Notable Publications

Author	Pubmed ID	Journal	Application
Yi-Hsin Chan	31558158	Cardiovasc Diabetol	WB
Yung-Hsin Yeh	27562817	Basic Res Cardiol	WB
Lu Dong	30837634	Sci Rep	WB,IHC

## Storage

### Storage:

Store at -20°C. Stable for one year after shipment.

### Storage Buffer:

PBS with 0.02% sodium azide and 50% glycerol pH 7.3.

Aliquoting is unnecessary for -20°C storage

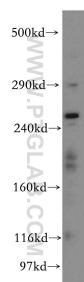
For technical support and original validation data for this product please contact:

T: 1 (888) 4PTGLAB (1-888-478-4522) (toll free in USA), or 1(312) 455-8498 (outside USA)

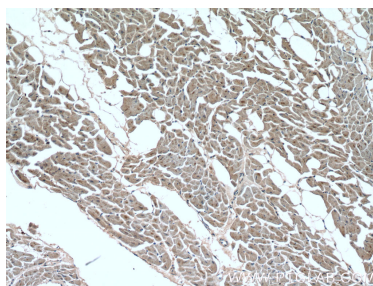
E: proteintech@ptglab.com  
W: ptglab.com

**This product is exclusively available under Proteintech Group brand and is not available to purchase from any other manufacturer.**

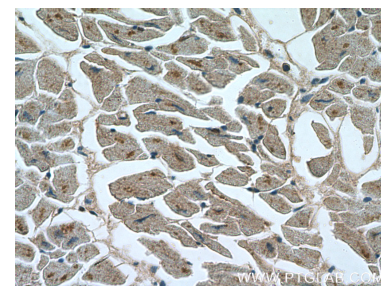
## Selected Validation Data



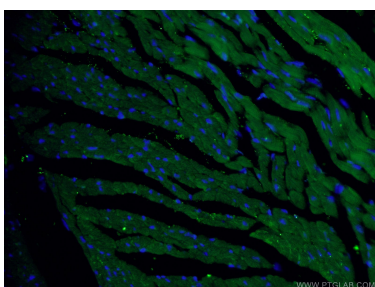
HeLa cells were subjected to SDS PAGE followed by western blot with 19765-1-AP (Ryanodine Receptor 2 antibody) at dilution of 1:500 incubated at room temperature for 1.5 hours.



Immunohistochemical analysis of paraffin-embedded human heart tissue slide using 19765-1-AP (Ryanodine Receptor 2 antibody at dilution of 1:200 (under 10x lens).



Immunohistochemical analysis of paraffin-embedded human heart tissue slide using 19765-1-AP (Ryanodine Receptor 2 antibody at dilution of 1:200 (under 40x lens).



Immunofluorescent analysis of (4% PFA) fixed mouse heart tissue using 19765-1-AP (Ryanodine Receptor 2 antibody) at dilution of 1:50 and Alexa Fluor 488-conjugated AffiniPure Goat Anti-Rabbit IgG(H+L).