

For Research Use Only

ADRA1B-Specific Polyclonal ANTIBODY



Catalog Number: 19776-1-AP

Basic Information

Catalog Number: 19776-1-AP	GenBank Accession Number: NM_000679	Purification Method: Antigen affinity purification
Size: 150UL, Concentration: 240 µg/ml by Bradford method using BSA as the standard;	GeneID (NCBI): 147	Recommended Dilutions: IHC 1:50-1:500
Source: Rabbit	Full Name: adrenergic, alpha-1B-, receptor	
Isotype: IgG	Calculated MW: 57 kDa	

Applications

Tested Applications: IHC, ELISA	Positive Controls: IHC : mouse brain tissue, human heart tissue
Species Specificity: human, mouse, rat	
Note-IHC: suggested antigen retrieval with TE buffer pH 9.0; (*) Alternatively, antigen retrieval may be performed with citrate buffer pH 6.0	

Background Information

ADRA1B belongs to the G-protein coupled receptor 1 family. ADRA1B mediates its action by association with G proteins that activate a phosphatidylinositol-calcium second messenger system. This antibody is specific to ADRA1B.

Storage

Storage:
Store at -20°C. Stable for one year after shipment.
Storage Buffer:
PBS with 0.1% sodium azide and 50% glycerol pH 7.3.
Aliquoting is unnecessary for -20°C storage

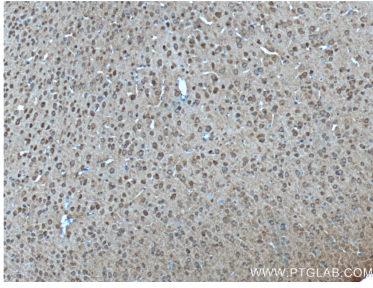
For technical support and original validation data for this product please contact:

T: 1 (888) 4PTGLAB (1-888-478-4522) (toll free in USA), or 1(312) 455-8498 (outside USA)

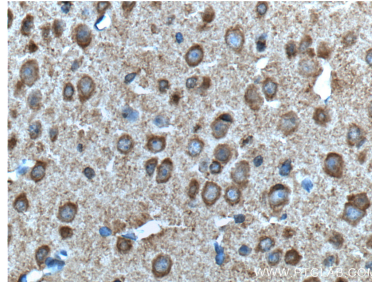
E: proteintech@ptglab.com
W: ptglab.com

This product is exclusively available under Proteintech Group brand and is not available to purchase from any other manufacturer.

Selected Validation Data



Immunohistochemical analysis of paraffin-embedded mouse brain tissue slide using 19776-1-AP (ADRA1B-Specific Antibody) at dilution of 1:100 (under 10x lens). Heat mediated antigen retrieval with Tris-EDTA buffer (pH 9.0).



Immunohistochemical analysis of paraffin-embedded mouse brain tissue slide using 19776-1-AP (ADRA1B-Specific Antibody) at dilution of 1:100 (under 40x lens). Heat mediated antigen retrieval with Tris-EDTA buffer (pH 9.0).