

For Research Use Only

# ADRA1A-Specific Polyclonal antibody



Catalog Number: 19777-1-AP

Featured Product

2 Publications

## Basic Information

**Catalog Number:**

19777-1-AP

**Size:**

150UL, Concentration: 260 µg/ml by Nanodrop and 207 µg/ml by Bradford method using BSA as the standard;

**Source:**

Rabbit

**Isotype:**

IgG

**GenBank Accession Number:**

NM\_000680

**GeneID (NCBI):**

148

**Full Name:**

adrenergic, alpha-1A-, receptor

**Calculated MW:**

51 kDa

**Observed MW:**

52 kDa

**Purification Method:**

Antigen affinity purification

**Recommended Dilutions:**

WB 1:500-1:2000

## Applications

**Tested Applications:**

FC, WB, ELISA

**Cited Applications:**

IF, IHC, WB

**Species Specificity:**

human, mouse, rat

**Cited Species:**

human

**Positive Controls:**

WB: mouse heart tissue, HeLa cells, mouse brain tissue

## Background Information

ADRA1A, also named as ADRA1C, belongs to the G-protein coupled receptor 1 family. ADRA1A mediates its action by association with G proteins that activate a phosphatidylinositol-calcium second messenger system. Its effect is mediated by G(q) and G(11) proteins. The antibody is specific to ADRA1A.

## Notable Publications

Author	Pubmed ID	Journal	Application
Miles Frost	32971843	Pharmaceuticals (Basel)	IHC, IF
Jun-Jie Wang	26545627	Vascul Pharmacol	WB

## Storage

**Storage:**

Store at -20°C. Stable for one year after shipment.

**Storage Buffer:**

PBS with 0.02% sodium azide and 50% glycerol pH 7.3.

Aliquoting is unnecessary for -20°C storage

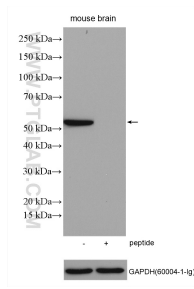
For technical support and original validation data for this product please contact:

T: 1 (888) 4PTGLAB (1-888-478-4522) (toll free in USA), or 1(312) 455-8498 (outside USA)

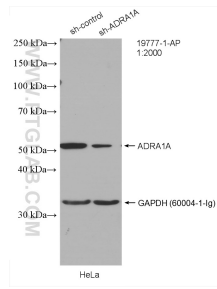
E: [proteintech@ptglab.com](mailto:proteintech@ptglab.com)  
W: [ptglab.com](http://ptglab.com)

This product is exclusively available under Proteintech Group brand and is not available to purchase from any other manufacturer.

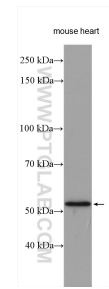
## Selected Validation Data



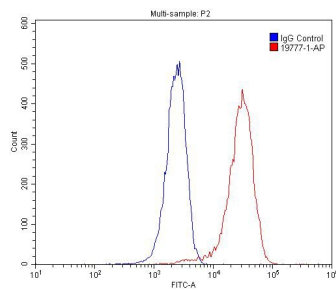
mouse brain tissue lysates were subjected to SDS PAGE followed by western blot with 19777-1-AP (ADRA1A-Specific antibody) at dilution of 1:1000 incubated at room temperature for 1.5 hours without or with blocking peptide (1.4 ug peptide was used to block the binding of 1.0 ug antibody).



WB result of ADRA1A-Specific antibody (19777-1-AP; 1:2000; incubated at room temperature for 1.5 hours) with sh-Control and sh-ADRA1A-Specific transfected HeLa cells.



mouse heart tissue were subjected to SDS PAGE followed by western blot with 19777-1-AP (ADRA1A-Specific antibody) at dilution of 1:1000 incubated at room temperature for 1.5 hours.



1X10<sup>6</sup> HepG2 cells were stained with 0.2ug ADRA1A-Specific antibody (19777-1-AP, red) and control antibody (blue). Fixed with 4% PFA blocked with 3% BSA (30 min). Alexa Fluor 488-conjugated AffiniPure Goat Anti-Rabbit IgG(H+L) with dilution 1:1500.