

For Research Use Only

BRCA2 Polyclonal antibody

Catalog Number: 19791-1-AP

Featured Product

7 Publications



Basic Information

Catalog Number:

19791-1-AP

Size:

150UL, Concentration: 133 µg/ml by Bradford method using BSA as the standard;

Source:

Rabbit

Isotype:

IgG

GenBank Accession Number:

NM_000059

GeneID (NCBI):

675

Full Name:

breast cancer 2, early onset

Calculated MW:

384 kDa

Observed MW:

384 kDa

Purification Method:

Antigen affinity purification

Recommended Dilutions:

WB 1:200-1:1000

Applications

Tested Applications:

FC, WB, ELISA

Cited Applications:

IHC, WB

Species Specificity:

human

Cited Species:

human

Positive Controls:

WB : human brain tissue, HeLa cells

Background Information

BRCA2, also named as FACD and FANCD1, is involved in double-strand break repair and/or homologous recombination. BRCA2 may participate in S phase checkpoint activation. Defects in BRCA2 are a cause of genetic susceptibility to breast cancer (BC) which also called susceptibility to familial breast-ovarian cancer type 2 (BROVCA2).

Notable Publications

Author	Pubmed ID	Journal	Application
Xing Ren	29168129	Hum Cell	WB
You Wang	28638454	J Cancer	WB
Qiuli Liu	29580149	Cancer Biol Ther	WB,IHC

Storage

Storage:

Store at -20°C. Stable for one year after shipment.

Storage Buffer:

PBS with 0.02% sodium azide and 50% glycerol pH 7.3.

Aliquoting is unnecessary for -20°C storage

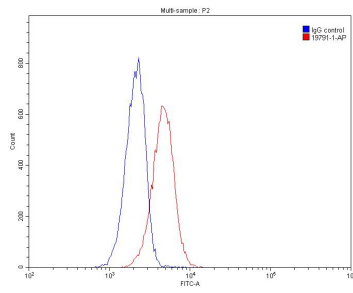
For technical support and original validation data for this product please contact:

T: 1 (888) 4PTGLAB (1-888-478-4522) (toll free in USA), or 1(312) 455-8498 (outside USA)

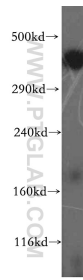
E: proteintech@ptglab.com
W: ptglab.com

This product is exclusively available under Proteintech Group brand and is not available to purchase from any other manufacturer.

Selected Validation Data



1X10⁶ HeLa cells were stained with 0.20ug BRCA2 antibody (19791-1-AP, red) and control antibody (blue). Fixed with 90% MeOH.



human brain tissue were subjected to SDS PAGE followed by western blot with 19791-1-AP (BRCA2 antibody) at dilution of 1:300 incubated at room temperature for 1.5 hours.